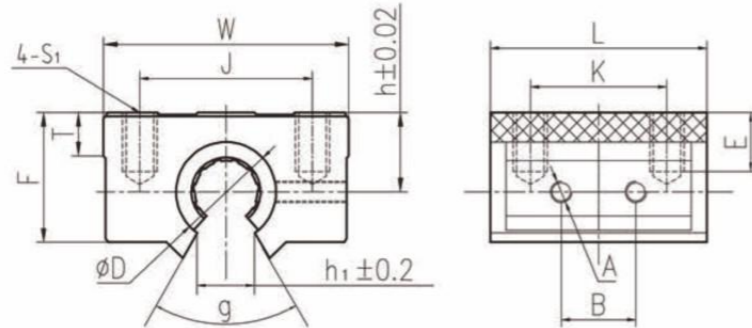


LIN-11GKL加长型开口直线轴承座 LIN-11 GKL Open Pillow Block, Long Design

Plastic Linear Bearings



轴 Shaft: h6-h9

| 订购编码 Order PN | 安装轴承 Bearing mm | 轴径 Shaft mm | 尺寸Size (mm) | | | | | | | | | | | | |
|------------------|-----------------------|-------------------|---------------|----|------|-------|------|----------------|------|----|-----|----|-----|----|----------------|
| | | | D(H7) | h | W | L | F | h ₁ | T | A | g | J | K | E | S ₁ |
| LIN-11GL-16 | LIN-11RL-16×2 | 16 | 28 | 19 | 49.7 | 86.3 | 32.3 | 17 | 11 | M5 | 60° | 37 | 70 | 15 | M5 |
| LIN-11GL-20 | LIN-11RL-20×2 | 20 | 32 | 21 | 54.1 | 96.2 | 35.2 | 17 | 11.8 | M5 | 60° | 41 | 80 | 17 | M5 |
| LIN-11GL-25 | LIN-11RL-25×2 | 25 | 40 | 26 | 76 | 131. | 42.2 | 21 | 12.5 | M6 | 60° | 54 | 110 | 20 | M6 |
| LIN-11GL-30 | LIN-11RL-30×2 | 30 | 45 | 30 | 78 | 141.5 | 49.1 | 21 | 15.5 | M6 | 60° | 58 | 115 | 25 | M8 |

| 订购编码 Order PN | 内径1.D mm | 公差 Tolerance mm | F max. [N] 动载荷 Dynamic Load P=5MPa | F max. [N] 静载荷 Static Load P=35MPa | 重量 Weight [g] |
|------------------|-------------|--------------------|--|--|------------------|
| LIN-11GL-16 | 16 | +0.030/+0.088 | 3456 | 24192 | 250 |
| LIN-11GL-20 | 20 | +0.030/+0.091 | 5400 | 37800 | 318 |
| LIN-11GL-25 | 25 | +0.030/+0.091 | 8400 | 61300 | 686 |
| LIN-11GL-30 | 30 | +0.040/+0.110 | 12240 | 85680 | 905 |

订购编码 Order PN: LIN-11GKL-16



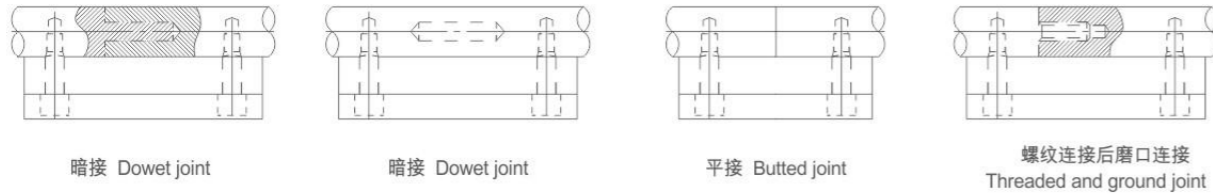
直线光轴 Linear Shaft



轴的特殊加工 Special Machining for shaft

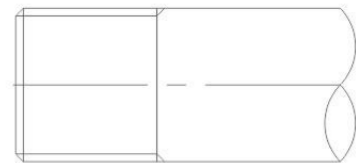
- 我公司可为您提供直径 $\phi 5\text{mm}-\phi 150\text{mm}$,最大长度可达6000的各种直线轴。
- 当您在长度上有特殊要求时,我公司满足不同长度的加工要求,当您要求长度大于6000mm时,我们还可以为您对接。(见图a)

- We can offer linear shaft with diameter $\phi 5\text{mm}-\phi 150\text{mm}$.maxium length up to 6000mm.
- When you are special requirements on length,we can meet your machining requirements with different length;when you request above 6000mm,we can anti-connect for you.(Shown in Fig a)

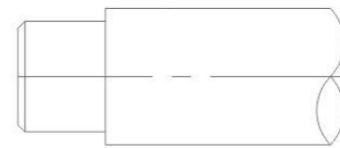


- 当您对轴特殊的加工要求时,如车螺纹、车端头打孔、铣键槽、径向打孔、车阶梯轴等。我们都可以为您提供加工,并且这些特殊加工是在热处理镀铬后完成的,因此保证了产品的精度。请把草图或对产品的询价及特殊加工要求告诉我们,我们的服务会让您满意的。

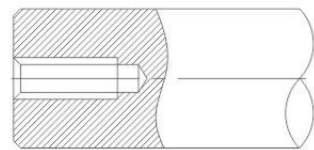
- When you have special requirements on machining,such as threading, coaxial holes drilled and tapped,radial holes drilled and tapped,reduced shaft diameter etc,we can machine for you,and these special machines are finished after heat treatment and hard chromic so that ensure the precision of product.Send us your detailed sketch or blue print for propmt quotatine and ation,you should be satisfied with our service.



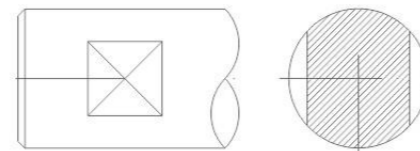
车螺纹
THREADING



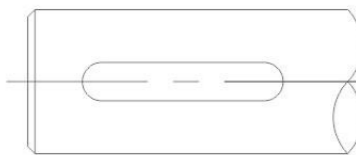
车阶梯轴
REDUCED SHAFT DIAMETER



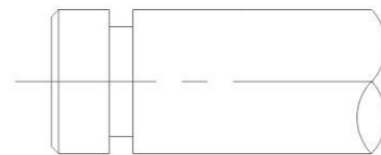
轴端打孔
COAXIAL HOLES DRILLED AND TAPPED



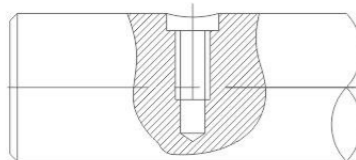
铣槽 - 单槽或多槽
FLATS-SINGLE OR MULTIPLE



铣键槽
KEY WAY



车卡环槽
SNAP RING GROOVES



径向打孔
RADIAL HOLES DRILLED AND TAPPED



车棱角
CHAMFERING

直线光轴 Linear Shaft

- 材质: 45 优质碳素钢 (S45C), 硬度 HRC58-60
- GCr15 轴承钢 (SUJ2), 硬度 HRC60-62
- 9Cr18 不锈钢 (SUS440), 硬度 HRC55 以上
- 表面可镀铬
- Material: 45 high quality carbon steel (S45C), hardness HRC58-60
- GCr15 bearing steel (SUJ2), hardness above HRC60-62
- 9 cr18 stainless steel (SUS440), hardness HRC55 above
- The surface can be hard chrome plated

公制轴 (ASIA/EUROPE SHAFT)

| 型号 MODEL NO. | 外径 (mm) OUTER DIAMETER | 精度 DIAMETER TOLERANCE | | 淬硬度深度 DEPTH OF EFFEVTIVE HARDNESS LARER | 重量 Kg/M Weight |
|-----------------|-----------------------------|--------------------------|----------|---|-------------------|
| | | g6 | h6 | | |
| SF3 | 3 | -0.002 -0.008 | 0 -0.006 | 0.4~0.7 | 0.05 |
| SF4 | 4 | -0.002 -0.008 | 0 -0.006 | 0.4~0.7 | 0.09 |
| SF5 | 5 | -0.002 -0.008 | 0 -0.006 | 0.4~0.7 | 0.15 |
| SF6 | 6 | -0.004 -0.012 | 0 -0.008 | 0.4~1.0 | 0.22 |
| SF8 | 8 | -0.005 -0.014 | 0 -0.009 | 0.4~1.0 | 0.4 |
| SF10 | 10 | -0.005 -0.014 | 0 -0.009 | 0.6~1.5 | 0.62 |
| SF11 | 11 | -0.006 -0.017 | 0 -0.011 | 0.6~1.5 | 0.74 |
| SF12 | 12 | -0.006 -0.017 | 0 -0.011 | 0.6~1.5 | 0.89 |
| SF13 | 13 | -0.006 -0.017 | 0 -0.011 | 0.6~1.5 | 1.04 |
| SF14 | 14 | -0.006 -0.017 | 0 -0.011 | 0.6~1.5 | 1.20 |
| SF15 | 15 | -0.006 -0.017 | 0 -0.011 | 0.6~1.5 | 1.38 |
| SF16 | 16 | -0.006 -0.017 | 0 -0.011 | 0.8~2.0 | 1.58 |
| SF17 | 17 | -0.006 -0.017 | 0 -0.011 | 0.8~2.0 | 1.78 |
| SF18 | 18 | -0.007 -0.020 | 0 -0.013 | 0.8~2.0 | 1.99 |
| SF19 | 19 | -0.007 -0.020 | 0 -0.013 | 0.8~2.0 | 2.22 |
| SF20 | 20 | -0.007 -0.020 | 0 -0.013 | 0.8~2.0 | 2.47 |
| SF22 | 22 | -0.007 -0.020 | 0 -0.013 | 0.8~2.0 | 2.98 |
| SF25 | 25 | -0.007 -0.020 | 0 -0.013 | 0.8~2.0 | 3.85 |
| SF28 | 28 | -0.007 -0.020 | 0 -0.013 | 0.8~2.0 | 4.83 |
| SF30 | 30 | -0.007 -0.020 | 0 -0.013 | 0.8~3.0 | 5.55 |
| SF32 | 32 | -0.009 -0.025 | 0 -0.016 | 0.8~3.0 | 6.31 |
| SF35 | 35 | -0.009 -0.025 | 0 -0.016 | 0.8~3.0 | 7.55 |
| SF38 | 38 | -0.009 -0.025 | 0 -0.016 | 0.8~3.0 | 8.90 |
| SF40 | 40 | -0.009 -0.025 | 0 -0.016 | 0.8~3.0 | 9.87 |
| SF45 | 45 | -0.009 -0.025 | 0 -0.016 | 0.8~3.0 | 12.49 |
| SF50 | 50 | -0.009 -0.025 | 0 -0.019 | 0.8~3.0 | 15.4 |
| SF55 | 55 | -0.009 -0.025 | 0 -0.019 | 1.5~3.0 | 18.66 |
| SF60 | 60 | -0.010 -0.029 | 0 -0.019 | 1.5~3.0 | 22.21 |
| SF70 | 70 | -0.010 -0.029 | 0 -0.019 | 1.5~3.0 | 30.23 |
| SF80 | 80 | -0.012 -0.034 | 0 -0.022 | 1.5~3.0 | 39.48 |
| SF90 | 90 | -0.012 -0.034 | 0 -0.022 | 1.5~3.0 | 49.97 |
| SF100 | 100 | -0.012 -0.034 | 0 -0.022 | 2.0~3.0 | 61.70 |
| SF110 | 110 | -0.012 -0.034 | 0 -0.022 | 2.0~3.0 | 76.02 |
| SF120 | 120 | -0.014 -0.039 | 0 -0.022 | 2.0~3.0 | 88.84 |
| SF150 | 150 | -0.014 -0.039 | 0 -0.025 | 2.0~3.0 | 138.82 |

空心轴 Hollow Shaft



- 空心轴：可根据客户要求定制内径和壁厚
Hollow shaft: the internal diameter and wall thickness can be customized according to customer requirements.

- 材质：GCr15 轴承钢 (SUJ2)，硬度 HRC60-62
- Material: GCr15(SUJ2), Rigidity: HRC60-62

公制空心轴 (THE METRIC SYSTEM OF HOLLOW SHAFT)

| 型号 MODEL NO. | 内径 (mm) INNER DIAMETER | 外径 (mm) OUTER DIAMETER | 精度 DIAMETER TOLERANCE | | 淬硬度深度 DEPTH OF EFFEVE HARDNESS LARE |
|-----------------|-----------------------------|---------------------------|--------------------------|----------|---|
| | | | g6 | h6 | |
| SP12 | 6 | 12 | -0.006 -0.017 | 0 -0.011 | 0.6~1.5 |
| SP13 | 6 | 13 | -0.006 -0.017 | 0 -0.011 | 0.6~1.5 |
| SP16 | 10 | 16 | -0.006 -0.017 | 0 -0.011 | 0.8~2.0 |
| SP20 | 13 | 20 | -0.007 -0.020 | 0 -0.013 | 0.8~2.0 |
| SP25 | 17 | 25 | -0.007 -0.020 | 0 -0.013 | 0.8~2.0 |
| SP30 | 20 | 30 | -0.009 -0.025 | 0 -0.016 | 0.8~3.0 |
| SP35 | 24 | 35 | -0.009 -0.025 | 0 -0.016 | 0.8~3.0 |
| SP40 | 30 | 40 | -0.009 -0.025 | 0 -0.016 | 0.8~3.0 |
| SP50 | 38 | 50 | -0.009 -0.025 | 0 -0.016 | 0.8~3.0 |
| SP60 | 48 | 60 | -0.010 -0.029 | 0 -0.019 | 0.8~3.0 |



英制轴 (INCH SHAFT)

| 型号 MODEL NO. | 外径 (mm) OUTER DIAMETER | 精度 DIAMETER TOLERANCE | | 淬硬度深度 DEPTH OF EFFEVE HARDNESS LARER | 重量 Kg/M Weight |
|-----------------|-----------------------------|--------------------------|----------|--|-------------------|
| | | g6 | h6 | | |
| SI-04 | 6.35 | -0.004 -0.012 | 0 -0.008 | 0.4~1.0 | 0.25 |
| SI-06 | 9.525 | -0.005 -0.014 | 0 -0.009 | 0.6~1.5 | 0.56 |
| SI-08 | 12.7 | -0.006 -0.017 | 0 -0.011 | 0.6~1.5 | 1 |
| SI-10 | 15.875 | -0.006 -0.017 | 0 -0.011 | 0.8~2.0 | 1.55 |
| SI-12 | 19.05 | -0.007 -0.020 | 0 -0.013 | 0.8~2.0 | 2.24 |
| SI-16 | 25.4 | -0.007 -0.020 | 0 -0.013 | 0.8~2.0 | 4 |
| SI-20 | 31.75 | -0.007 -0.020 | 0 -0.013 | 0.8~3.0 | 6.21 |
| SI-24 | 38.1 | -0.009 -0.025 | 0 -0.016 | 0.8~3.0 | 8.95 |
| SI-32 | 50.8 | -0.009 -0.025 | 0 -0.016 | 0.8~3.0 | 15.9 |

滚轮滚针轴承 Needle Roller Bearings

