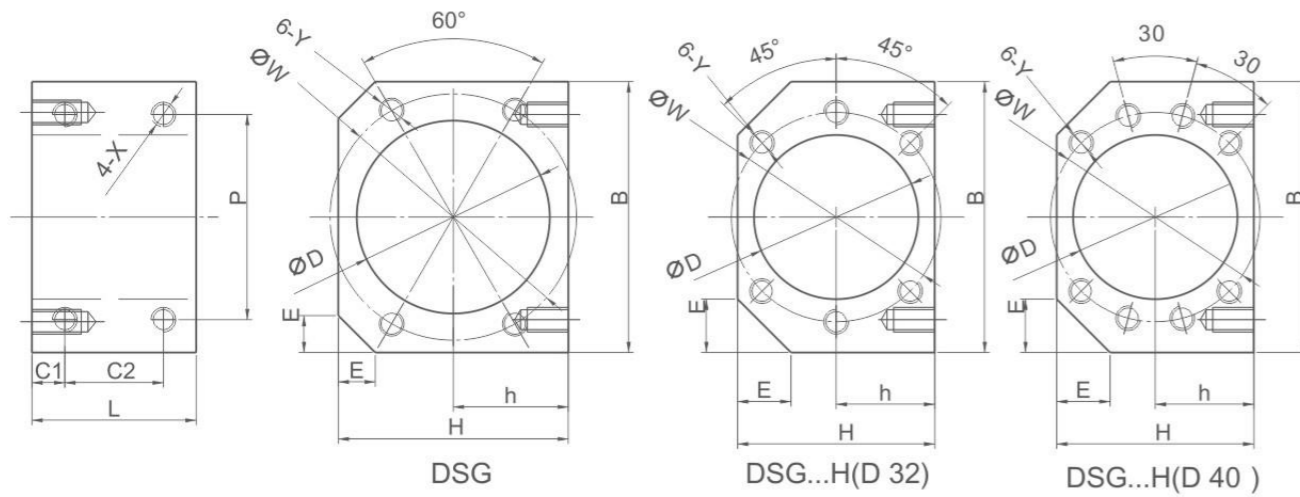


DSG Ball Screw Nut Support



Model Number	Suitable Nut	D	B	H	h	E	L	C1	C2	P	X	W	Y
DSG12H	SFU1204,SFS1205	22.1 24.1	50	35	17.7	-	36	8	24	36	M4	32	M4
DSG16H	SFU-1604,1605,1610	28	52	40	20	12	40	8	24	40	M5	38	M5
	SFS-1610,1616,1620												
DSG20H	SFU-2004,2005	36	62	44	22	12	40	8	24	48	M6	47	M6
	SFS-2010,2020												
DSG25H	SFU-2504,2505,2510	40	66	48	24	13	40	8	24	50	M6	51	M6
	SFS-2505,2510,2520												
DSG32H	SFU-3204,3205,3210	50	86	62	31	17	40	8	24	66	M8	65	M8
	SFS-3205,3210, 3220,3232												
DSG40H	SFU-4005,4010,	63	100	80	40	/	59	9.5	40	78	M8	78	M8
	SFS-4005,4010, 4020,4040												
DSG50H	SFU-5005,5010	75	120	90	45	/	60	10	40	100	M10	93	M10
	SFS-5020,5050												
DSG1616	SFE/SFY-1616	32	55	40	20	6	27	6	15	46	M4	42	M4
DSG2020	SFE/SFY-2020	39	66	47	23.5	7.5	35	7.5	20	56	M5	50	M5
DSG2525	SFE/SFY-2525	47	80	55	27.5	10	34	7	20	68	M6	60	M6
DSG3232	SFE/SFY-3232	58	95	66	33	10	55	10	35	82	M8	74	M8

直线轴承 Linear Bearings



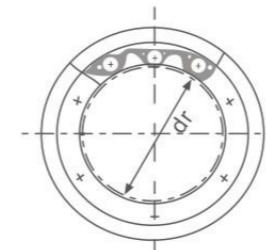
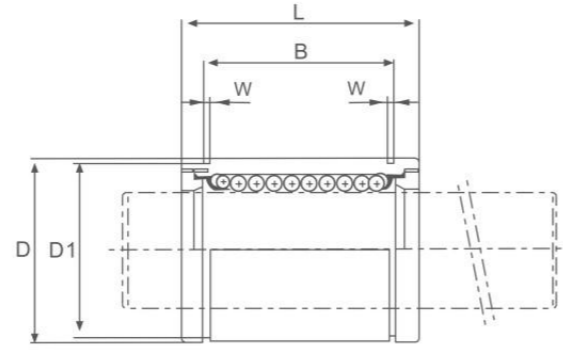
LM...UU



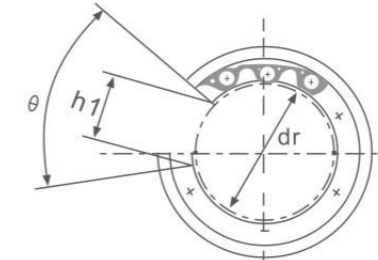
LM

LM OP

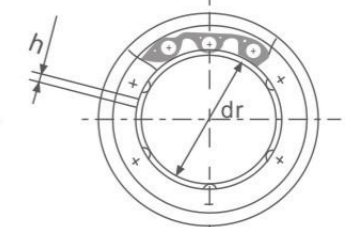
LM AJ



LM



LM -OP



LM -AJ

型号 Part Number									
密封型 Seal Type	钢球列数 Ball Circuit	开口型 Open Type	钢球列数 Ball Circuit	调整型 Adjustable Type	钢球列数 Ball Circuit	内径 dr (mm)	公差 Tolerance (μm)	外径 D (mm)	公差 Tolerance (μm)
LM3	4	-	-	-	-	3		7	0
LM4	4	-	-	-	-	4	0-8	8	-9
LM5UU	4	-	-	-	-	5		10	
LM6UU	4	-	-	LM6UUAJ	4	6		12	
LM8SUU	4	-	-	LM8SUUAJ	4	8		15	0-11
LM8UU	4	-	-	LM8UUAJ	4	8	0-9	15	
LM10UU	4	-	-	LM10UUAJ	4	10		19	
LM12UU	4	LM12UU-OP	3	LM12UUAJ	4	12		21	0-13
LM13UU	4	LM13UU-OP	3	LM13UUAJ	4	13		23	
LM16UU	5	LM16UU-OP	4	LM16UUAJ	5	16		28	
LM20UU	5	LM20UU-OP	4	LM20UUAJ	5	20	0-10	32	
LM25UU	6	LM25UU-OP	5	LM25UUAJ	6	25		40	0-16
LM30UU	6	LM30UU-OP	5	LM30UUAJ	6	30		45	
LM35UU	6	LM35UU-OP	5	LM35UUAJ	6	35		52	
LM40UU	6	LM40UU-OP	5	LM40UUAJ	6	40	0-12	60	0-19
LM50UU	6	LM50UU-OP	5	LM50UUAJ	6	50		80	
LM60UU	6	LM60UU-OP	5	LM60UUAJ	6	60	0	90	0
LM 80UU	6	LM 80UU -OP	5	LM80UU AJ	6	80	-15	120	-22
LM 100UU	6	LM 100U U- OP	5	LM 100U UAJ	6	100	0/-20	150	0/-25

主要尺寸和公差 Main Dimensions and Tolerance									径向跳动 Eccentricity (max) μm	径向间隙 Radial Clearance (max) μm	额定载荷 Basic Load Rating		重量 g Weight
高度 L (mm)	外止动槽 Tolerance (μm)	B (mm)	外止动槽 Tolerance (μm)	W (mm)	D1 (mm)	h (mm)	h1 (mm)	θ			动 Dynamic Co N	静 Static Co N	
10		-		-	-	-	-	-			69	105	1.35
12	0-120	-		-	-	-	-	-	8		88	127	2
15		10.2		1.1	9.6	-	-	-			167	206	4
19		13.5		1.1	11.5	1.0	-	-		-3	206	265	8.5
17		11.5		1.1	14.3	1.0	-	-			176	216	11
24		17.5		1.1	14.3	1.0	-	-			274	392	17
29	0-200	22	0-200	1.3	18	1.0	6.8	80°	12		372	549	36
30		23		1.3	20	1.5	8	80°		-4	510	784	42
32		23		1.3	22	1.5	9	80°			510	784	49
37		26.5		1.6	27	1.5	11	80°			774	1180	76
42		30.5		1.6	30.5	1.5	11	60°		-6	882	1370	100
59		41		1.85	38	2	12	50°	15		980	1570	240
64		44.5		1.85	43	2.5	15	50°		-8	1570	2740	270
70	0-300	49.5	0-400	2.1	49	2.5	17	50°			1670	3140	425
80		60.5		2.1	57	3	20	50°	20	-10	2160	4020	654
100		74		2.6	76.5	3	25	50°		-13	3820	7940	1700
110		85		3.15	86.5	3	30	50°			4700	10000	2000
140	0-400	105.5		4.15	116	3	40	50°	25	-20	7350	16000	4420
175		125.5		4.15	145	3	50	50°	30		14100	34800	8600

LME...UU



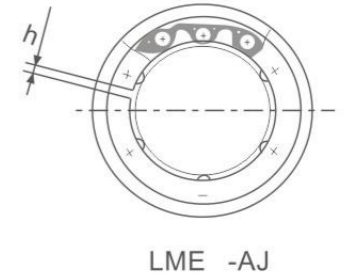
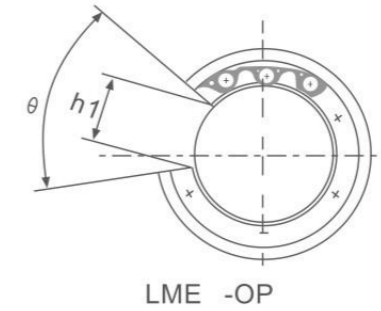
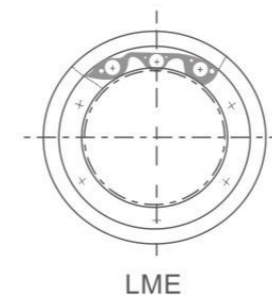
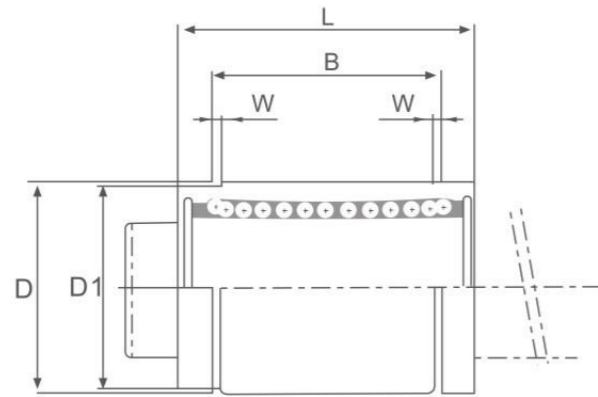
LME



LME OP



LME AJ



型号 Part Number								
密封型 Seal Type	钢球列数 Ball Circuit	开口型 Open Type	钢球列数 Ball Circuit	调整型 Adjustable Type	钢球列数 Ball Circuit	内径 dr (mm)	公差 Tolerance (μm)	外径 D (mm)
LME5UU	4	-	-	LME5UUAJ	4	5	+8 0	12
LME8UU	4	-	-	LME8UUAJ	4	8		16
LME12UU	4	LME12UU-OP	3	LME12UUAJ	4	12		22
LME16UU	5	LME16UU-OP	4	LME16UUAJ	5	16	+9 -1	26
LME20UU	5	LME20UU-OP	4	LME20UUAJ	5	20		32
LME25UU	6	LME25UU-OP	5	LME25UUAJ	6	25	+11 -1	40
LME30UU	6	LME30UU-OP	5	LME30UUAJ	6	30		47
LME40UU	6	LME40UU-OP	5	LME40UUAJ	6	40	+13 -2	62
LME50UU	6	LME50UU-OP	5	LME50UUAJ	6	50		75
LME60UU	6	LME60UU-OP	5	LME60UUAJ	6	60		90
LME80UU	6	LM E80U U- OP	5	LM E80UUA J	6	80	+16 -4	120

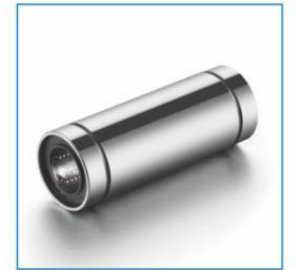
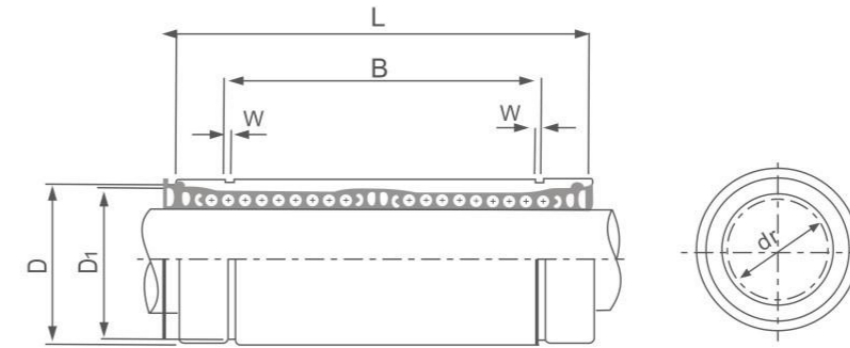
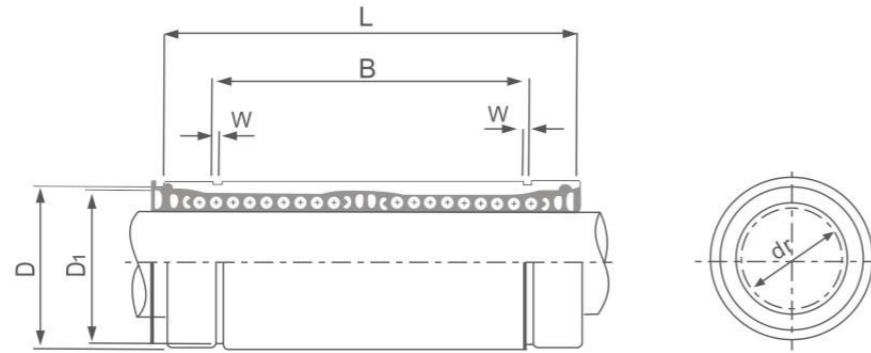
主要尺寸和公差 Main Dimensions and Tolerance										径向跳动 Eccentricity (max) μm	径向间隙 Radial Clearance (max) μm	额定载荷 Basic Load Rating		重量 g Weight
外止动槽 Tolerance (μm)	高度 L (mm)	外止动槽 Tolerance (μm)	B (mm)	外止动槽 Tolerance (μm)	W (mm)	D1 (mm)	h (mm)	h1 (mm)	θ			动 Dynamic Co N	静 Static Co N	
0 -8	22	0 -200	14.5	0 -300	1.1	11.5	-	-	-	12	-3	206	265	11
	25		16.5		1.1	15.2	-	-	-			265	402	22
0 -9	32	0 -200	22.9	0 -300	1.3	21	1.5	7.5	78°	12	-4	510	784	45
	36		24.9		1.3	24.9	1.5	10	78°			578	892	60
0 -11	45	0 -300	31.5	0 -400	1.6	30.3	2	10	60°	15	-6	862	1370	102
	58		44.1		1.85	37.5	2	12.5	60°			980	1570	235
0 -13	68	0 -300	52.1	0 -400	1.85	44.5	2	12.5	50°	15	-8	1570	2740	360
	80		60.6		2.15	59	3	16.8	50°			2160	4020	770
0 -15	100	0 -400	77.6	0 -400	2.65	72	3	21	50°	17	-13	3820	7940	1250
	125		101.7		3.15	86.5	3	27.2	54°			4700	9800	2220
-15	165	0 -400		0 -400			3	36.3	54°	20	-20	7350	16000	5000

LM ... LUU

LME ... LUU



LM...L

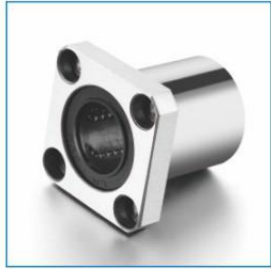


LME...L

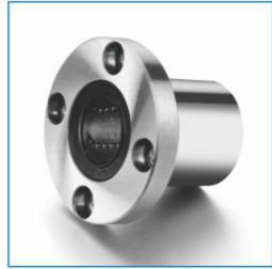
型号 Part Number	主要尺寸和公差 Main dimensions and Tolerance											额定载荷 Basic Load Rating		静高 跳动 Eccen- tricity	重量 g Weight			
	密封型 Seal Type	钢球列数 Ball Circuit	内径 dr (mm)	公差 Tolerance (μ m)	外径 D (mm)	公差 Tolerance (μ m)	高度 L (mm)	公差 Tolerance (μ m)	B (mm)	公差 Tolerance (μ m)	W (mm)	D1 (mm)	动 Dynamic Co N			静 Static Co N		
LM6LUU		4	6		12	0	35		27		1.1	11.5	323	530	15	16		
LM8LUU		4	8		15	-13	45		35		1.1	14.3	431	784			20	440
LM10LUU		4	10	0 -10	19		55	0 -300	44	0 -400	1.3	18	588	1100				
LM12LUU		4	12		21	0 -16	57		46		1.3	20	813	1570	30	3500		
LM13LUU		4	13		23		61		46		1.3	22	813	1570			30	3500
LM16LUU		5	16		28		70		53		1.6	27	1230	2350				
LM20LUU		5	20		32		80		61		1.6	30.5	1400	2740	30	3500		
LM25LUU		6	25	0 -12	40	0 -19	112		82		1.85	38	1560	3140			30	3500
LM30LUU		6	30		45		123		89		1.85	43	2490	5490				
LM35LUU		6	35		52		135		99	0 -500	2.1	49	2650	6270	30	3500		
LM40LUU		6	40	0 -15	60	0 -22	151		121		2.1	57	3430	8040			30	3500
LM50LUU		6	50		80		192		148		2.6	76.5	6080	15900				
LM60LUU		6	60	0/-20	90	0/-25	209		170		3.15	86.5	7550	20000	30	3500		

型号 Part Number	主要尺寸和公差 Main dimensions and Tolerance											静高 跳动 Eccen- tricity	额定载荷 Basic Load Rating		重量 g Weight			
	密封型 Seal Type	钢球列数 Ball Circuit	内径 dr (mm)	公差 Tolerance (μ m)	外径 D (mm)	公差 Tolerance (μ m)	高度 L (mm)	公差 Tolerance (μ m)	B (mm)	公差 Tolerance (μ m)	W (mm)		D1 (mm)	动 Dynamic Co N		静 Static Co N		
LME8LUU		4	8		16	+9 -1	46		33		1.1	15.2	421	804	15	80		
LME12LUU		4	12		22	0 -11	61	0 -300	45.8	0 -400	1.3	21	813	1570			17	430
LME16LUU		5	16	+11 -1	26		68		49.8		1.3	24.9	921	1780				
LME20LUU		5	20		32		80		61		1.6	30.5	1370	2740	17	430		
LME25LUU		6	25	+13 -2	40	0 -13	112		82		1.85	38	1570	3140			20	1400
LME30LUU		6	30		47		123	0 -400	104.2	0 -500	1.85	44.5	2500	5490				
LME40LUU		6	40		62	0 -15	151		121.2		2.15	59	3430	8040	25	3900		
LME50LUU		6	50	+16 -4	75		192		155.2		2.65	72	6080	15900			25	3900
LME60LUU		6	60		90	0/-20	209		170		3.15	86.5	7550	20000				

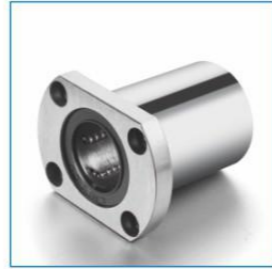
LMF/K/H...UU



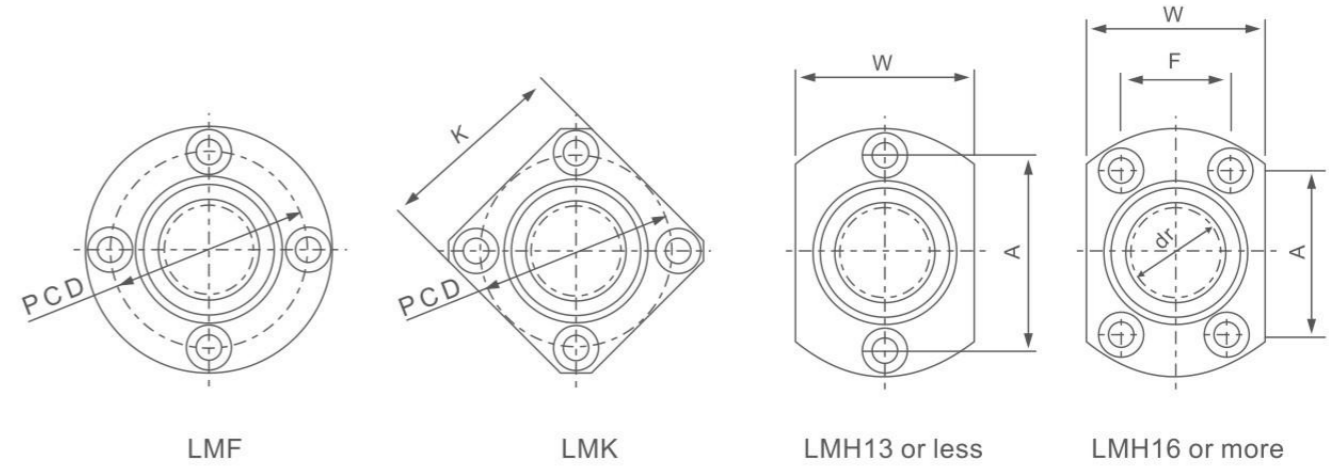
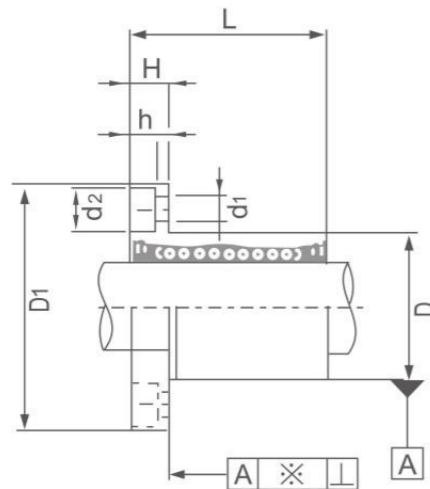
LMK



LMF



LMH



Linear Bearings

Linear Bearings

型号 Part Number			主要尺寸和公差 Main Dimensions and Tolerance										
密封型 Seal Type	钢球列数 Ball Circuit	内径 dr (mm)	公差 Tolerance (μm)	外径 D (mm)	公差 Tolerance (μm)	L ± 0.3 (mm)	D1 (mm)	H (mm)	PCD (mm)	K (mm)	W (mm)	A (mm)	
LMF6UU	LMK6UU	LMH6UU	4	6	12	0	19	28	5	20	22	18	20
LMF8UU	LMK8UU	LMH8UU	4	8	15	-11	24	32	5	24	25	21	24
LMF10UU	LMK10UU	LMH10UU	4	10	19	0	29	40	6	29	30	25	29
LMF12UU	LMK12UU	LMH12UU	4	12	21	-9	30	42	6	32	32	27	32
LMF13UU	LMK13UU	LMH13UU	4	13	23	-13	32	43	6	33	34	29	33
LMF16UU	LMK16UU	LMH16UU	5	16	28	-13	37	48	6	38	37	34	31
LMF20UU	LMK20UU	LMH20UU	5	20	32	-16	42	54	8	43	42	38	36
LMF25UU	LMK25UU	LMH25UU	6	25	40	0	59	62	8	51	50	46	40
LMF30UU	LMK30UU	LMH30UU	6	30	45	-10	64	74	10	60	58	51	49
LMF35UU	LMK35UU	-	6	35	52	-12	70	82	10	67	64	-	-
LMF40UU	LMK40UU	-	6	40	60	-19	80	96	13	78	75	-	-
LMF50UU	LMK50UU	-	6	50	80	-12	100	116	13	98	92	-	-
LMF60UU	LMK60UU	-	6	60	90	0/-15	110	134	18	112	106	-	-

F (mm)	连接孔 d1xd2xh (mm)	径向跳动 Eccentricity (max) μm	径向间隙 Radial Clearance (max) μm	额定载荷 Basic Load Rating		重量 g Weight
				动 Dynamic Co N	静 Static Co N	
-	3.5x6x3.1	12	-3	206	265	24
-	3.5x6x3.1			274	392	37
-	4.5x7.5x4.1			372	549	72
-	4.5x7.5x4.1			510	784	76
-	4.5x7.5x4.1	15	-4	510	784	88
22	4.5x7.5x4.1			774	1180	120
24	5.5x9x5.1			882	1370	180
32	5.5x9x5.1	20	-6	980	1570	340
35	6.6x11x6.1			1570	2740	470
-	6.6x11x6.1	25	-8	1670	3140	650
-	9x14x8.1			2160	4020	1060
-	9x14x8.1			3820	7940	2200
-	11x17x11.1	-13	-10	4700	10000	3000
-	11x17x11.1			4700	10000	3000

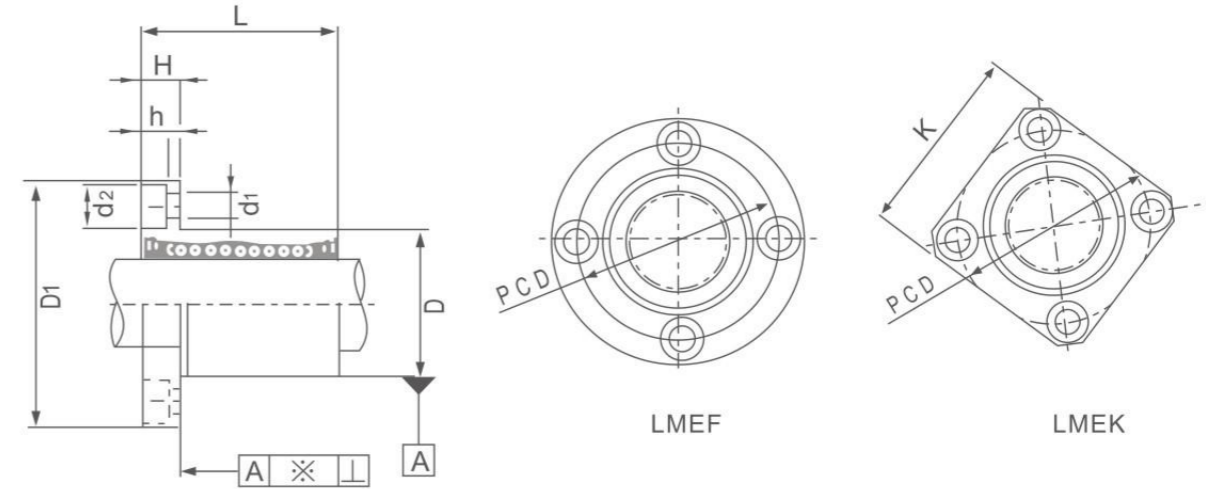
LMEF/K...UU



LMEF



LMEK



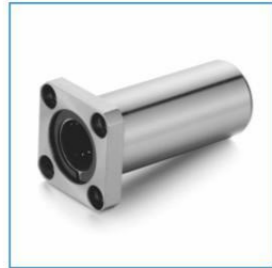
LMEF

LMEK

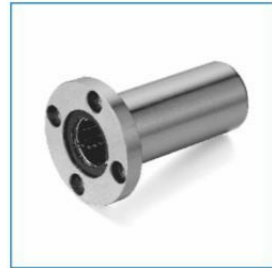
型号 Part Number		主要尺寸和公差 Main Dimensions and Tolerance						
密封型 Seal Type	钢球列数 Ball Circuit	内径 dr (mm)	公差 Tolerance (μm)	外径 D (mm)	公差 Tolerance (μm)	L ± 0.3 (mm)	D1 (mm)	
LMEF8UU	LMEK8UU	4	8	+8	16	0/-11	25	32
LMEF12UU	LMEK12UU	4	12	0	22	0	32	42
LMEF16UU	LMEK16UU	5	16	+9	26	-13	36	46
LMEF20UU	LMEK20UU	5	20	-1	32	0	45	54
LMEF25UU	LMEK25UU	6	25	+11	40	-16	58	62
LMEF30UU	LMEK30UU	6	30	-1	47	0	68	76
LMEF40UU	LMEK40UU	6	40	+13	62	-19	80	98
LMEF50UU	LMEK50UU	6	50	-2	75	0	100	112
LMEF60UU	LMEK60UU	6	60	0/-22	90	0/-22	125	134

H (mm)	PCD (mm)	K (mm)	连接孔 d1xd2xh (mm)	径向跳动 Eccentricity (max) μm	径向间隙 Radial Clearance (max) μm	额定载荷 Basic Load Rating		重量 g Weight
						动 Dynamic Co N	静 Static Co N	
5	24	25	3.5x6x3.1		-3	265	402	41
6	32	32	4.5x7.5x4.1	12	-4	510	784	80
6	36	35	4.5x7.5x4.1			578	892	103
8	43	42	5.5x9x5.1		-6	862	1370	182
8	51	50	5.5x9x5.1	15		980	1570	335
10	62	60	6.6x11x6.1		-8	1570	2740	560
13	80	75	9x14x8.1			2160	4020	1175
13	94	88	9x14x8.1	20		3820	7940	1745
18	112	106	11x17x11.1	25	-13	4700	9800	3220

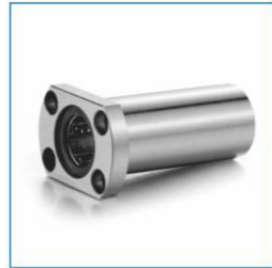
LMF/K/H ... LUU



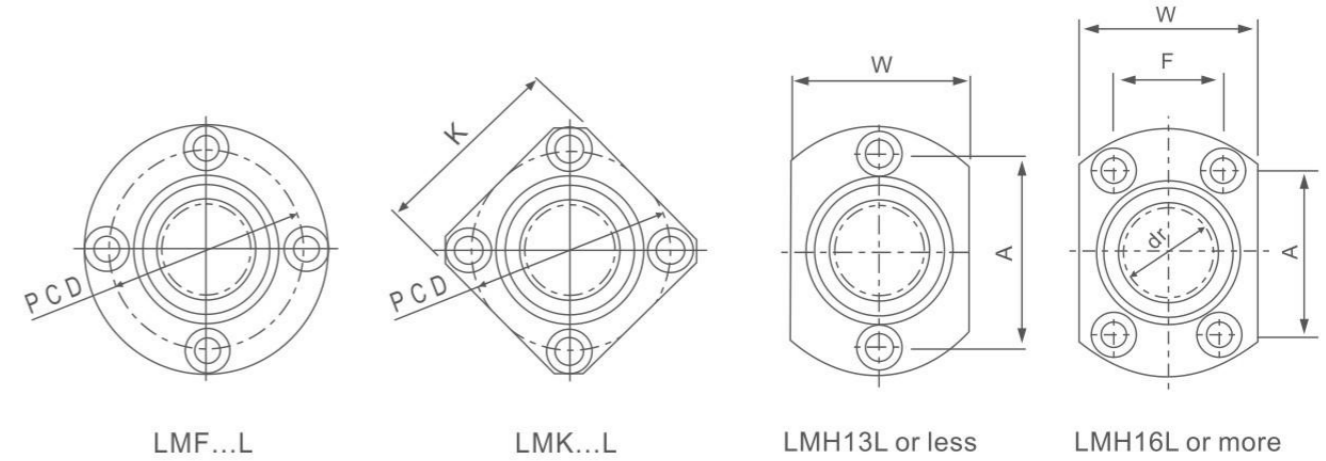
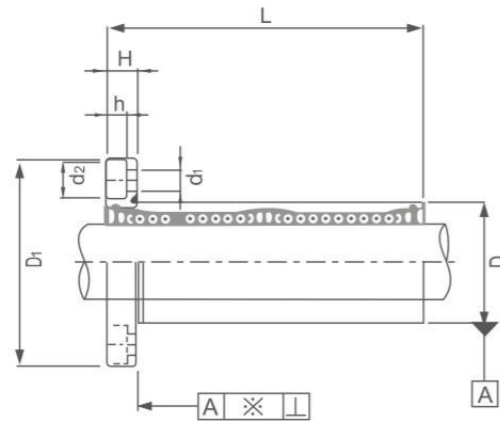
LMK...L



LMF...L



LMH...L



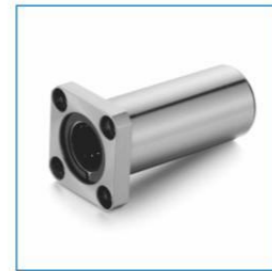
型号 Part Number			主要尺寸和公差 Main Dimensions and Tolerance							
密封型 Seal Type	钢球列数 Ball Circuit	内径 dr (mm)	公差 Tolerance (μm)	外径 D (mm)	公差 Tolerance (μm)	L ±0.3 (mm)	D1 (mm)	H (mm)		
LMF6LUU	LMK6LUU	LMH6LUU	4	6		12	0	35	28	5
LMF8LUU	LMK8LUU	LMH8LUU	4	8		15	-13	45	32	5
LMF10LUU	LMK10LUU	LMH10LUU	4	10	0	19		55	40	6
LMF12LUU	LMK12LUU	LMH12LUU	4	12	-10	21		57	42	6
LMF13LUU	LMK13LUU	LMH13LUU	4	13		23		61	43	6
LMF16LUU	LMK16LUU	LMH16LUU	5	16		28		70	48	6
LMF20LUU	LMK20LUU	LMH20LUU	5	20		32		80	54	8
LMF25LUU	LMK25LUU	LMH25LUU	6	25	0	40		112	62	8
LMF30LUU	LMK30LUU	LMH30LUU	6	30	-12	45		123	74	10
LMF35LUU	LMK35LUU	-	6	35		52		135	82	10
LMF40LUU	LMK40LUU	-	6	40	0	60		151	96	13
LMF50LUU	LMK50LUU	-	6	50	-15	80		192	116	13
LMF60LUU	LMK60LUU	-	6	60	0/-20	90	0/-25	209	134	18

PCD (mm)	K (mm)	W (mm)	A (mm)	F (mm)	连接孔 d1xd2xh (mm)	径向跳动 Eccentricity (max) (μm)	径向间隙 Radial Clearance (max) (μm)	额定载荷 Basic Load Rating		重量 g Weight
								动 Dynamic Co N	静 Static Co N	
20	22	18	20	-	3.5x6x3.1	15	-3	323	529	31
24	25	21	24	-	3.5x6x3.1	15	-3	431	784	51
29	30	25	29	-	4.5x7.5x4.1	15	-4	588	1100	98
32	32	27	32	-	4.5x7.5x4.1	15	-4	813	1570	110
33	34	29	33	-	4.5x7.5x4.1	15	-4	813	1570	130
38	37	34	31	22	4.5x7.5x4.1	15	-6	1230	2350	190
43	42	38	36	24	5.5x9x5.1	20	-6	1400	2740	260
51	50	46	40	32	5.5x9x5.1	20	-6	1560	3140	540
60	58	51	49	35	6.6x11x6.1	20	-8	2490	5490	680
67	64	-	-	-	6.6x11x6.1	25	-8	2650	6270	1020
78	75	-	-	-	9x14x8.1	25	-10	3430	8040	1570
98	92	-	-	-	9x14x8.1	25	-13	6080	15900	3600
112	106	-	-	-	11x17x11.1	25	-13	7550	20000	4500

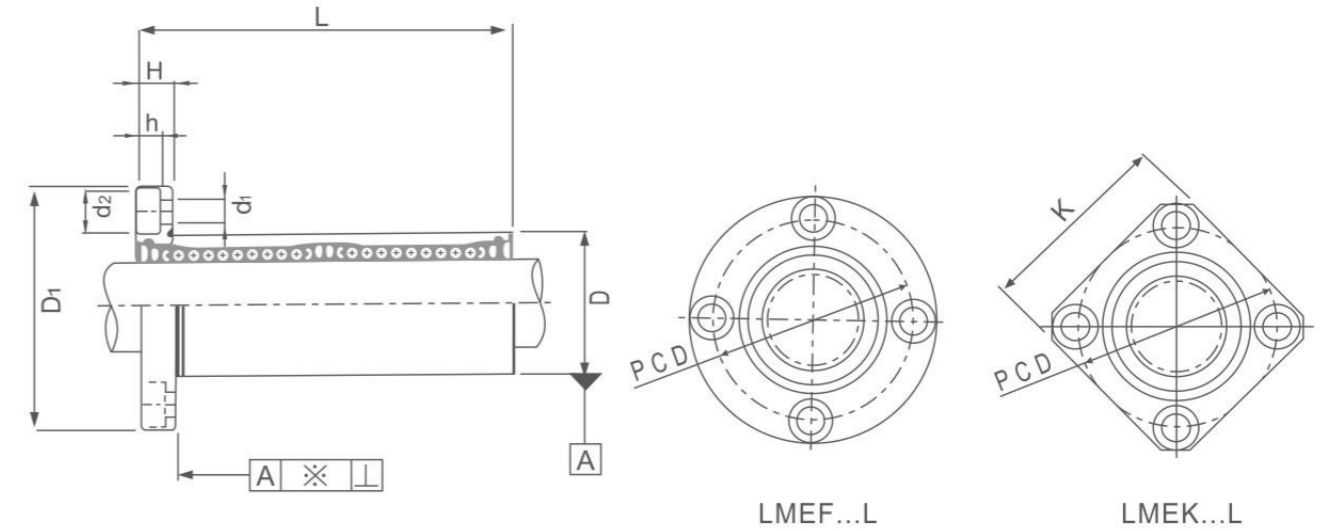
LMEF/K...LUU



LMEF...L



LMEK...L



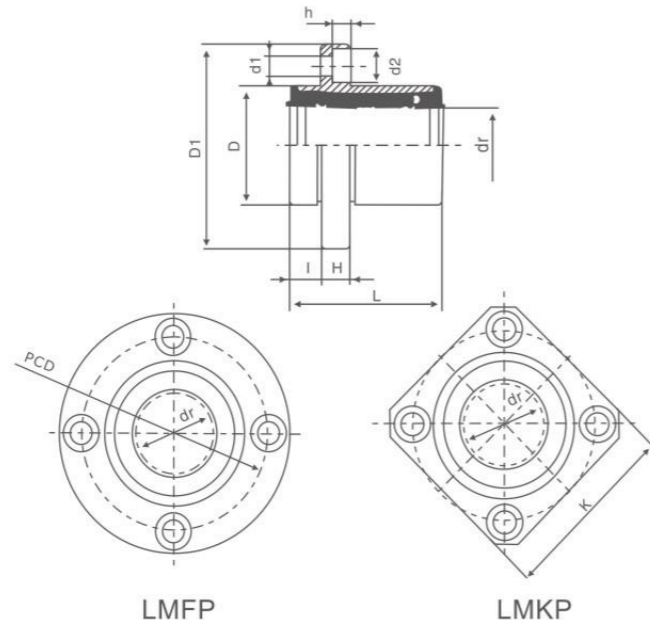
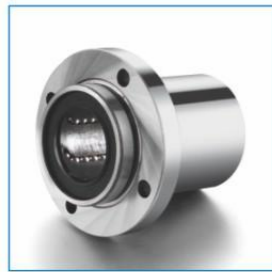
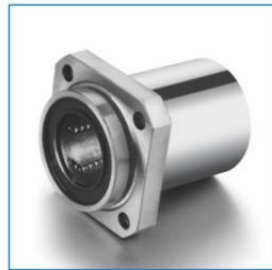
LMEF...L

LMEK...L

型号 Part Number		主要尺寸和公差 Main Dimensions and Tolerance								
密封型 Seal Type	钢球列数 Ball Circuit	内径 dr (mm)	公差 Tolerance (μm)	外径 D (mm)	公差 Tolerance (μm)	L (± 0.3) (mm)	D1 (mm)	H (mm)		
LMEF8LUU	LMEK8LUU	4	8	+9	-1	16	0/-13	46	32	5
LMEF12LUU	LMEK12LUU	4	12	+11	-1	22	0	61	42	6
LMEF16LUU	LMEK16LUU	5	16	+11	-1	26	-16	68	46	6
LMEF20LUU	LMEK20LUU	5	20	+13	-2	32	0	80	54	8
LMEF25LUU	LMEK25LUU	6	25	+13	-2	40	-19	112	62	8
LMEF30LUU	LMEK30LUU	6	30	+16	-4	47	0	123	76	10
LMEF40LUU	LMEK40LUU	6	40	+16	-4	62	-22	151	98	13
LMEF50LUU	LMEK50LUU	6	50	+16	-4	75	0	192	112	13
LMEF60LUU	LMEK60LUU	6	60	+16	-4	90	0/-25	209	134	18

PCD (mm)	K (mm)	连接孔 d1xd2xh (mm)	径向跳动 Eccentricity (max) (μm)	径向间隙 Radial Clearance (max) (μm)	额定载荷 Basic Load Rating		重量 g Weight
					动 Dynamic Co N	静 Static Co N	
24	25	3.5x6x3.1	15	-3	421	804	59
32	32	4.5x7.5x4.1	15	-4	813	1570	110
36	35	4.5x7.5x4.1	15	-4	921	1780	160
43	42	5.5x9x5.1	17	-6	1370	2740	260
51	50	5.5x9x5.1	17	-6	1570	3140	540
62	60	6.6x11x6.1	17	-8	2500	5490	815
80	75	9x14x8.1	20	-8	3430	8040	1805
94	88	9x14x8.1	25	-13	6080	15900	2820
112	106	11x17x11.1	25	-13	7550	20000	4920

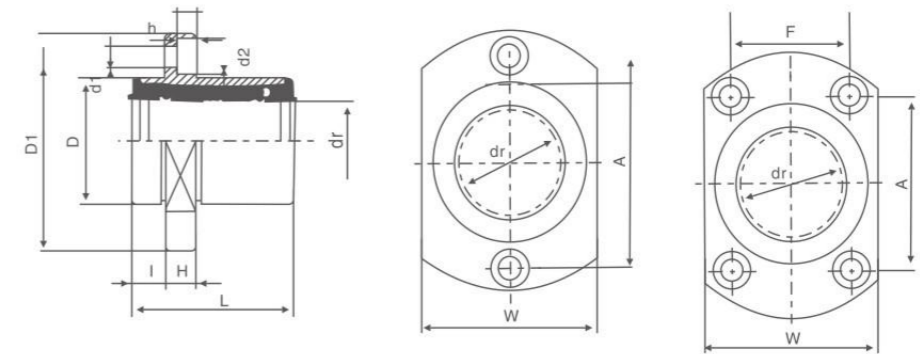
LMF/KP...UU



LMFP

LMKP

LMHP...UU



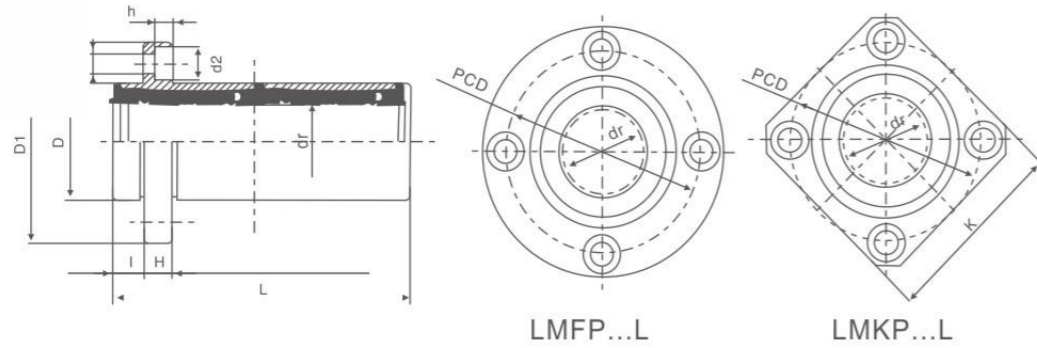
LMHP6~LMHP13

LMHP16~LMHP30

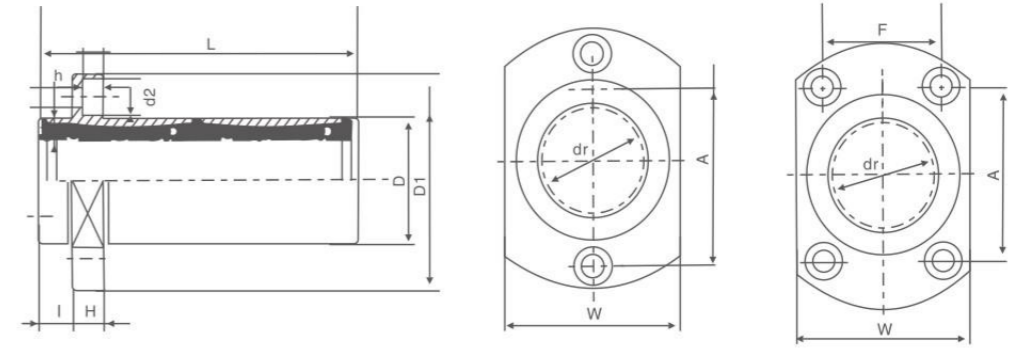
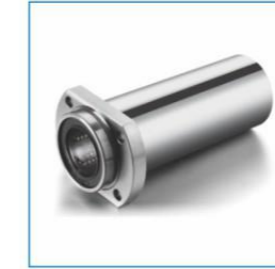
型号 Part Number	主要尺寸和公差 Main Dimensions and Tolerance											径向跳动 Eccentricity	额定载荷 Basic Load Rating		重量 g Weight		
	密封型 Seal Type	钢球列数 Ball Circuit	内径 dr (mm)	公差 Tolerance (μ m)	外径 D (mm)	公差 Tolerance (μ m)	L ± 0.3 (mm)	I (mm)	D1 (mm)	K (mm)	H (mm)		PCD (mm)	连接孔 d1xd2xh (mm)		动 Dynamic Co N	静 Static Co N
LMFP6UU LMKP6UU		4	6		12	0 -13	19	5	28	22	5	20	3.5x6x3.1		206	265	24
LMFP8UU LMKP8UU		4	8		15		24	5	32	25	5	24	3.5x6x3.1		274	392	37
LMFP10UU LMKP10UU		4	10	0 -9	19		29	6	40	30	6	29	4.5x7.5x4.1	12	372	549	72
LMFP12UU LMKP12UU		4	12		21	0 -16	30	6	42	32	6	32	4.5x7.5x4.1		510	784	76
LMFP13UU LMKP13UU		4	13		23		32	6	43	34	6	33	4.5x7.5x4.1		510	784	88
LMFP16UU LMKP16UU		5	16		28		37	6	48	37	6	38	4.5x7.5x4.1		774	1180	120
LMFP20UU LMKP20UU		5	20		32		42	8	54	42	8	43	5.5x9x5.1		882	1370	180
LMFP25UU LMKP25UU		6	25	0 -10	40	0 -19	59	8	62	50	8	51	5.5x9x5.1	15	980	1570	340
LMFP30UU LMKP30UU		6	30		45		64	10	74	58	10	60	6.6x11x6.1		1570	2740	470
LMFP35UU LMKP35UU		6	35		52		70	10	82	64	10	67	6.6x11x6.1		1670	3140	650
LMFP40UU LMKP40UU		6	40	0 -12	60	0 -22	80	13	96	75	13	78	9x14x8.1	20	2160	4020	1060
LMFP50UU LMKP50UU		6	50		80		100	13	116	92	18	98	9x14x8.1		3820	7940	2200
LMFP60UU LMKP60UU		6	60	0 -15	90	0 -25	110	18	134	106	18	112	11x17x11.1	25	4700	10000	3000

型号 Part Number	主要尺寸和公差 Main Dimensions and Tolerance											径向跳动 Eccentricity	额定载荷 Basic Load Rating		重量 g Weight			
	密封型 Seal Type	钢球列数 Ball Circuit	内径 dr (mm)	公差 Tolerance (μ m)	外径 D (mm)	公差 Tolerance (μ m)	L ± 0.3 (mm)	I (mm)	D1 (mm)	W (mm)	H (mm)		A (mm)	F (mm)		连接孔 d1xd2xh (mm)	动 Dynamic Co N	静 Static Co N
LMHP6UU		4	6		12	0 -13	19	5	28	18	5	20	-	3.5x6x3.1		206	265	21
LMHP8UU		4	8		15		24	5	32	21	5	24	-	3.5x6x3.1		274	392	33
LMHP10UU		4	10	0 -9	19		29	6	40	25	6	29	-	4.5x7.5x4.1	12	372	549	64
LMHP12UU		4	12		21	0 -16	30	6	42	27	6	32	-	4.5x7.5x4.1		510	784	68
LMHP13UU		4	13		23		32	6	43	29	6	33	-	4.5x7.5x4.1		510	784	81
LMHP16UU		5	16		28		37	6	48	34	6	31	22	4.5x7.5x4.1		774	1180	112
LMHP20UU		5	20		32		42	8	54	38	8	36	24	5.5x9x5.1		882	1370	167
LMHP25UU		6	25	0 -10	40	0 -19	59	8	62	46	8	40	32	5.5x9x5.1	15	980	1570	325
LMHP30UU		6	30		45		64	10	74	51	10	49	35	6.6x11x6.1		1570	2740	388

LMF/KP ... LUU



LMHP...LUU

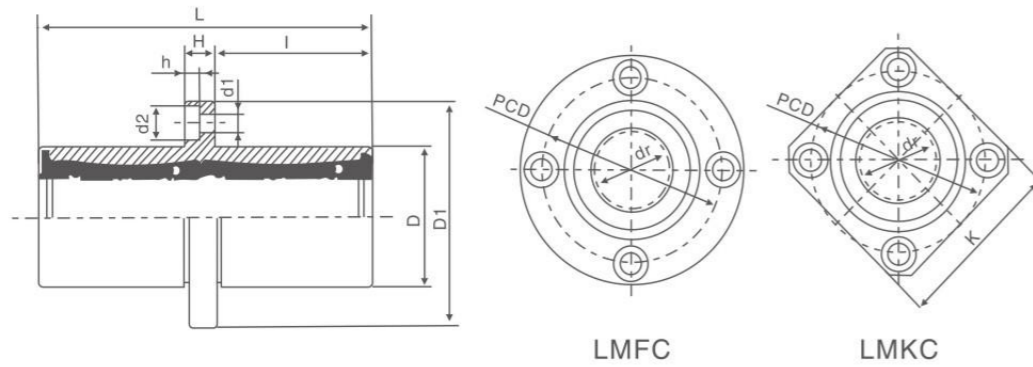


LMHP6L~LMHP13L LMHP16L~LMHP30L

型号 Part Number	主要尺寸和公差 Main Dimensions and Tolerance											额定载荷 Basic Load Rating	重量 g Weight			
	密封型 Seal Type	钢球列数 Ball Circuit	内径 dr (mm)	公差 Tolerance (μm)	外径 D (mm)	公差 Tolerance (μm)	L ±0.3 (mm)	I (mm)	D1 (mm)	K (mm)	H (mm)			PCD (mm)	d1xd2xh (mm)	径向跳动 Eccentricity
LMFP6LUU LMKP6LUU	4	6	12	0	35	5	28	22	5	20	3.5x6x3.1	323	529	31		
LMFP8LUU LMKP8LUU	4	8	15	-13	45	5	32	25	5	24	3.5x6x3.1	431	784	51		
LMFP10LUU LMKP10LUU	4	10	19	0	55	6	40	30	6	29	4.5x7.5x4.1	588	1100	98	15	
LMFP12LUU LMKP12LUU	4	12	21	-10	57	6	42	32	6	32	4.5x7.5x4.1	813	1570	110		
LMFP13LUU LMKP13LUU	4	13	23	0	61	6	43	34	6	33	4.5x7.5x4.1	813	1570	130		
LMFP16LUU LMKP16LUU	5	16	28	-16	70	6	48	37	6	38	4.5x7.5x4.1	1230	2350	190		
LMFP20LUU LMKP20LUU	5	20	32	0	80	8	54	42	8	43	5.5x9x5.1	1400	2740	260		
LMFP25LUU LMKP25LUU	6	25	40	-12	112	8	62	50	8	51	5.5x9x5.1	1560	3140	540	20	
LMFP30LUU LMKP30LUU	6	30	45	0	123	10	74	58	10	60	6.6x11x6.1	2490	5490	680		
LMFP35LUU LMKP35LUU	6	35	52	-19	135	10	82	64	10	67	6.6x11x6.1	2650	6270	1020		
LMFP40LUU LMKP40LUU	6	40	60	0	151	13	96	75	13	78	9x14x8.1	3430	8040	1570	25	
LMFP50LUU LMKP50LUU	6	50	80	-22	192	13	116	92	13	98	9x14x8.1	6080	15900	3600		
LMFP60LUU LMKP60LUU	6	60	90	0	209	18	134	106	18	112	11x17.5x10.8	7550	20000	4500		

型号 Part Number	Main Dimensions and Tolerance											额定载荷 Basic Load Rating	重量 g Weight				
	密封型 Seal Type	钢球列数 Ball Circuit	内径 dr (mm)	公差 Tolerance (μm)	外径 D (mm)	公差 Tolerance (μm)	L ±0.3 (mm)	I (mm)	D1 (mm)	W (mm)	H (mm)			A (mm)	F (mm)	d1xd2xh (mm)	径向跳动 Eccentricity
LMHP6LUU	4	6	12	0	35	5	28	18	5	20	-	3.5x6x3.1	323	529	28		
LMHP8LUU	4	8	15	-13	45	5	32	21	5	24	-	3.5x6x3.1	431	784	47		
LMHP10LUU	4	10	19	0	55	6	40	25	6	29	-	4.5x7.5x4.1	588	1100	90	15	
LMHP12LUU	4	12	21	-10	58	6	42	27	6	32	-	4.5x7.5x4.1	813	1570	102		
LMHP13LUU	4	13	23	0	61	6	43	29	6	33	-	4.5x7.5x4.1	813	1570	123		
LMHP16LUU	5	16	28	-16	70	6	48	34	6	31	22	4.5x7.5x4.1	1230	2350	182		
LMHP20LUU	5	20	32	0	80	8	54	38	8	36	24	5.5x9x5.1	1400	2740	247		
LMHP25LUU	6	25	40	-12	112	8	62	46	8	40	32	5.5x9x5.1	1560	3140	525	20	
LMHP30LUU	6	30	45	0	123	10	74	51	10	49	35	6.6x11x6.1	2490	5490	645		

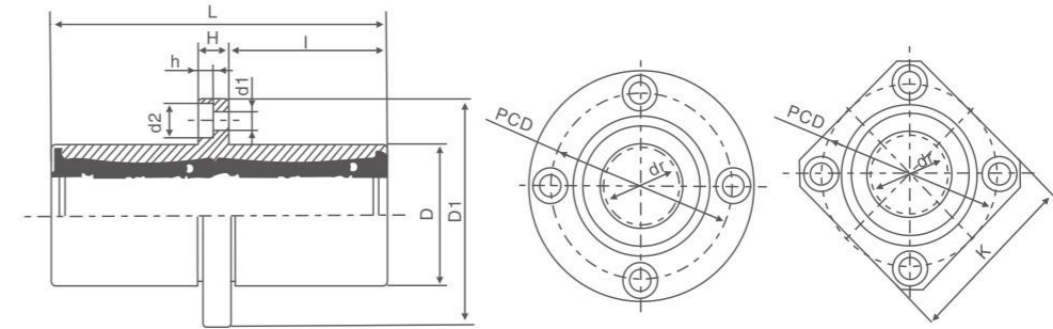
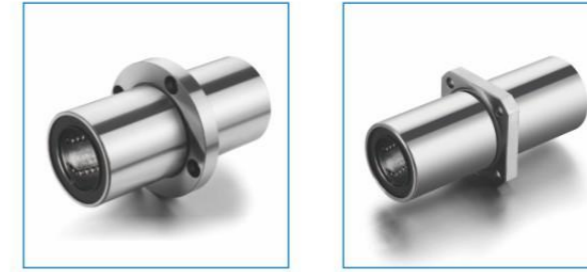
LMF/KC...UU



LMFC

LMKC

LMEF/KC...UU



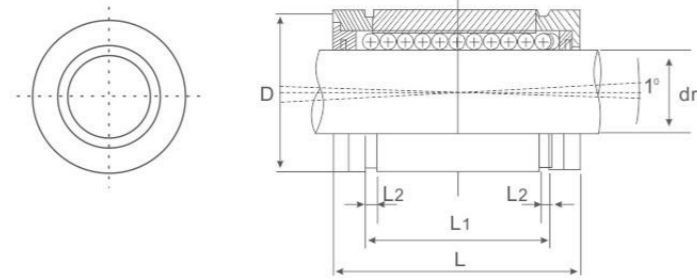
LMEFC

LMEKC

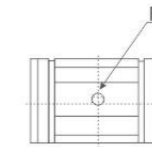
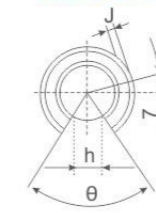
型号 Part Number	主要尺寸和公差 Main Dimensions and Tolerance												额定载荷 Basic Load Rating	重量 g Weight			
	密封型 Seal Type	钢球列数 Ball Circuit	内径 dr (mm)	公差 Tolerance (μm)	外径 D (mm)	公差 Tolerance (μm)	L ±0.3 (mm)	I (mm)	D1 (mm)	K (mm)	H (mm)	PCD (mm)			d1xd2xh (mm)	径向跳动 Eccentricity	动 Dynamic Co. N
LMFC6UU		4	6		12	0	35	15	28	22	5	20	3.5x6x3.1	15	323	529	31
LMKC6UU		4	6		12	-13	35	15	28	22	5	20	3.5x6x3.1	15	323	529	31
LMFC8UU		4	8		15		45	20	32	25	5	24	3.5x6x3.1	15	431	784	51
LMKC8UU		4	8		15		45	20	32	25	5	24	3.5x6x3.1	15	431	784	51
LMFC10UU		4	10		19		55	24.5	40	30	6	29	4.5x7.5x4.1	15	588	1100	98
LMKC10UU		4	10		19		55	24.5	40	30	6	29	4.5x7.5x4.1	15	588	1100	98
LMFC12UU		4	12		21		57	25.5	42	32	6	32	4.5x7.5x4.1	15	813	1570	110
LMKC12UU		4	12		21		57	25.5	42	32	6	32	4.5x7.5x4.1	15	813	1570	110
LMFC13UU		4	13		23		61	27.5	43	34	6	33	4.5x7.5x4.1	15	813	1570	130
LMKC13UU		4	13		23		61	27.5	43	34	6	33	4.5x7.5x4.1	15	813	1570	130
LMFC16UU		5	16		28		70	32	48	37	6	38	4.5x7.5x4.1	15	1230	2350	190
LMKC16UU		5	16		28		70	32	48	37	6	38	4.5x7.5x4.1	15	1230	2350	190
LMFC20UU		5	20		32		80	36	54	42	8	43	5.5x9x5.1	20	1400	2740	260
LMKC20UU		5	20		32		80	36	54	42	8	43	5.5x9x5.1	20	1400	2740	260
LMFC25UU		6	25		40		112	52	62	50	8	51	5.5x9x5.1	20	1560	3140	540
LMKC25UU		6	25		40		112	52	62	50	8	51	5.5x9x5.1	20	1560	3140	540
LMFC30UU		6	30		45		123	56.5	74	58	10	60	6.6x11x6.1	20	2490	5490	680
LMKC30UU		6	30		45		123	56.5	74	58	10	60	6.6x11x6.1	20	2490	5490	680
LMFC35UU		6	35		52		135	62.5	82	64	10	67	6.6x11x6.1	20	2650	6270	1020
LMKC35UU		6	35		52		135	62.5	82	64	10	67	6.6x11x6.1	20	2650	6270	1020
LMFC40UU		6	40		60		151	69	96	75	13	78	9x14x8.1	25	3430	8040	1570
LMKC40UU		6	40		60		151	69	96	75	13	78	9x14x8.1	25	3430	8040	1570
LMFC50UU		6	50		80		192	89.5	116	92	13	98	9x14x8.1	25	6080	15900	3600
LMKC50UU		6	50		80		192	89.5	116	92	13	98	9x14x8.1	25	6080	15900	3600
LMFC60UU		6	60		90		209	95.5	134	106	18	112	11x17x11.1	30	7550	20000	4500
LMKC60UU		6	60		90		209	95.5	134	106	18	112	11x17x11.1	30	7550	20000	4500

型号 Part Number	主要尺寸和公差 Main Dimensions and Tolerance												额定载荷 Basic Load Rating	重量 g Weight			
	密封型 Seal Type	钢球列数 Ball Circuit	内径 dr (mm)	公差 Tolerance (μm)	外径 D (mm)	公差 Tolerance (μm)	L ±0.3 (mm)	I (mm)	D1 (mm)	K (mm)	H (mm)	PCD (mm)			d1xd2xh (mm)	径向跳动 Eccentricity	动 Dynamic Co. N
LMEFC8UU		4	8		16		46	20.5	32	25	5	24	3.5x6x3.1	15	431	804	59
LMEKC8UU		4	8		16		46	20.5	32	25	5	24	3.5x6x3.1	15	431	804	59
LMEFC12UU		4	12		22		61	27.5	42	32	6	32	4.5x7.5x4.1	15	813	1570	110
LMEKC12UU		4	12		22		61	27.5	42	32	6	32	4.5x7.5x4.1	15	813	1570	110
LMEFC16UU		5	16		26		68	31	46	35	6	36	4.5x7.5x4.1	15	921	1780	160
LMEKC16UU		5	16		26		68	31	46	35	6	36	4.5x7.5x4.1	15	921	1780	160
LMEFC20UU		5	20		32		80	36	54	42	8	43	5.5x9x5.1	20	1370	2740	260
LMEKC20UU		5	20		32		80	36	54	42	8	43	5.5x9x5.1	20	1370	2740	260
LMEFC25UU		6	25		40		112	52	62	50	8	51	5.5x9x5.1	17	1570	3140	540
LMEKC25UU		6	25		40		112	52	62	50	8	51	5.5x9x5.1	17	1570	3140	540
LMEFC30UU		6	30		47		123	56.5	76	60	10	62	6.6x11x6.1	20	2500	5490	815
LMEKC30UU		6	30		47		123	56.5	76	60	10	62	6.6x11x6.1	20	2500	5490	815
LMEFC40UU		6	40		62		151	69	98	75	13	80	9x14x8.1	20	3430	8040	1805
LMEKC40UU		6	40		62		151	69	98	75	13	80	9x14x8.1	20	3430	8040	1805
LMEFC50UU		6	50		75		192	89.5	112	88	13	94	9x14x8.1	25	6080	15900	2820
LMEKC50UU		6	50		75		192	89.5	112	88	13	94	9x14x8.1	25	6080	15900	2820
LMEFC60UU		6	60		90		209	95.5	134	106	18	112	11x17x11.1	25	7550	20000	4920
LMEKC60UU		6	60		90		209	95.5	134	106	18	112	11x17x11.1	25	7550	20000	4920

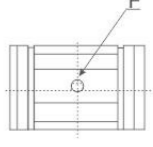
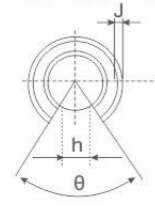
LMES Series



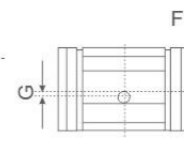
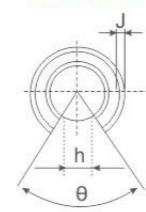
LMES12-OP



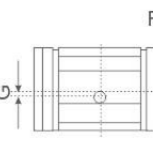
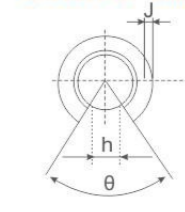
LMES16-OP LMES20-OP



LMES25-OP



LMES30-OP LMES40-OP LMES50-OP



Shaft Dia. (mm)	Standard Type				Dimensions (mm)					Diametral Clearance		Basic Load Ratings	
	Part number		No. of Ball circuit	Wgt. (g)	D1)	L ±0.2	L1 ±0.2	L2 min	dr (mm)	Tol. (μm)	Dynamic C (N)	Static Co (N)	
	w/o seal	with seal											
10	LMES 10	LMES 10 UU	5	17	19	29	21.7	1.35	10	+8	550	750	
12	LMES 12	LMES 12 UU	5	23	22	32	22.7	1.35	12	0	1100	1230	
16	LMES 16	LMES 16 UU	5	28	26	36	24.7	1.35	16	+9	1250	1550	
20	LMES 20	LMES 20 UU	6	61	32	45	31.3	1.65	20	1	1670	2580	
25	LMES 25	LMES 25 UU	6	122	40	58	43.8	1.90	25	+11	2750	3800	
30	LMES 30	LMES 30 UU	6	185	47	68	51.8	1.90	30	1	2800	4710	
40	LMES 40	LMES 40 UU	6	360	62	80	60.4	2.20	40	+13	5720	6500	
50	LMES 50	LMES 50 UU	6	580	75	100	77.4	2.70	50	2	7940	11460	

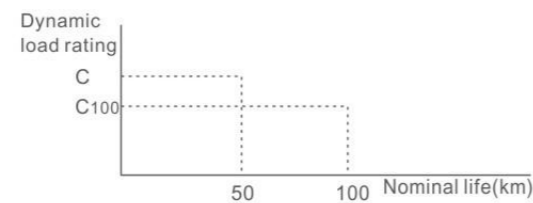
1) Based on nominal housing bore

1N = 0.102kgf

note) Reference of dynamic load rating
Dynamic load rating is based on the nominal life of 50km. In case of 100km, C on the table need to be divided by 1.26

ex) LME20 C : 2,580N C₁₀₀ : 2,040N

$$L = \left(\frac{C}{p}\right)^3 \times 50\text{km} \quad L = \left(\frac{C_{100}}{p}\right)^3 \times 100\text{km}$$

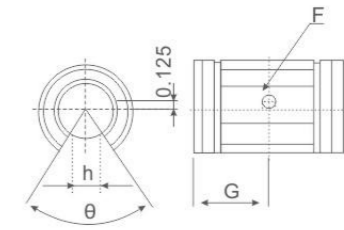
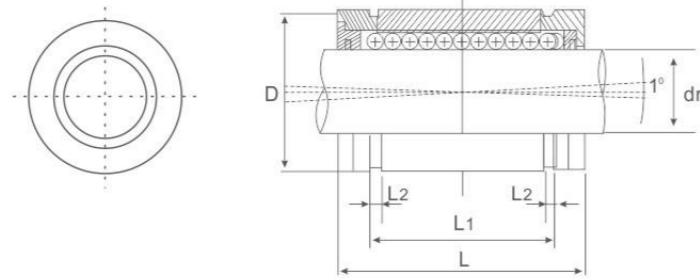
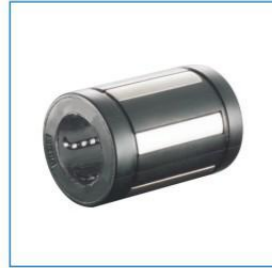


Shaft Dia. (mm)	Standard Type				Dimensions (mm)							Basic Load Ratings		
	Part number		No. of Ball circuit	Wgt. (g)	D1)	L ±0.2	L2 min	h	θ (°)	F	G	J	Dynamic C (N)	Static Co (N)
	w/o seal	with seal												
12	LMES 12 OP	LMES 12 UUOP	4	18	22	32	1.35	6.5	66		-	0.7	1260	1290
16	LMES 16 OP	LMES 16 UUOP	4	22	26	36	1.35	9	68		-	0.7	1320	1640
20	LMES 20 OP	LMES 20 UUOP	5	51	32	45	1.65	9	55		-	0.9	1720	2630
25	LMES 25 OP	LMES 25 UUOP	5	102	40	58	1.90	11.5	57	3.0	1.5	1.4	2850	3910
30	LMES 30 OP	LMES 30 UUOP	5	155	47	68	1.90	14	57		2.0	2.2	2900	4850
40	LMES 40 OP	LMES 40 UUOP	5	300	62	80	2.20	19.5	56		1.5	2.7	5900	6700
50	LMES 50 OP	LMES 50 UUOP	5	480	75	100	2.70	22.5	54		2.5	2.3	8100	11700

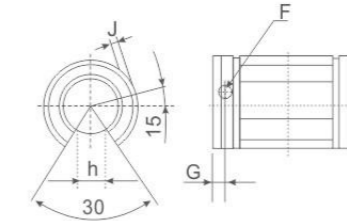
1N = 0.102kgf

1) Based on nominal housing bore

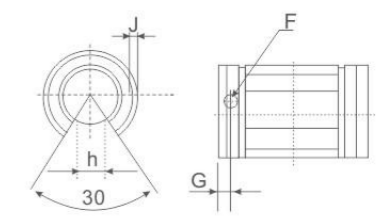
LMBS Series



LMBS08-OP



LMBS10-OP



LMBS12-OP through LMBS32-OP

Shaft Dia. (mm)	Standard Type				Dimensions (mm)						Basic Load Ratings	
	Part number		No. of Ball circuit	Wgt. (g)	Working Bore Diameter		D1)	L	L1	L2 min	Dynamic C (N)	Static Co (N)
	w/o seal	with seal			dr	Tol.						
1/4	LMBS 4	LMBS 4 UU	4	0.01	0.2500		0.5000	0.750/0.735	0.511/0.501	0.039	49	57
3/8	LMBS 6	LMBS 6 UU	4	0.02	0.3750		0.6250	0.875/0.860	0.99/0.689	0.039	66	78
1/2	LMBS 8	LMBS 8 UU	4	0.05	0.5000		0.8750	1.250/1.230	1.032/1.012	0.050	190	190
5/8	LMBS 10	LMBS 10 UU	5	0.08	0.6250	⁰ -0.0005	1.1250	1.500/1.480	1.105/1.095	0.056	340	290
3/4	LMBS 12	LMBS 12 UU	6	0.14	0.7500		1.2500	1.625/1.605	1.270/1.250	0.056	430	500
1	LMBS 16	LMBS 16 UU	6	0.29	1.0000		1.5625	2.250/2.230	1.884/1.864	0.070	780	820
1-1/4	LMBS 20	LMBS 20 UU	6	0.40	1.2500	⁰ -0.0006	2.0000	2.625/2.600	2.004/1.984	0.068	1270	1240
1-1/2	LMBS 24	LMBS 24 UU	6	0.80	1.5000		2.3750	3.000/2.970	2.410/2.390	0.086	1540	1510
2	LMBS 32	LMBS 32 UU	6	1.38	2.0000	⁰ -0.0008	3.0000	4.000/3.960	3.193/3.163	0.105	2580	2230

1) Based on nominal housing bore

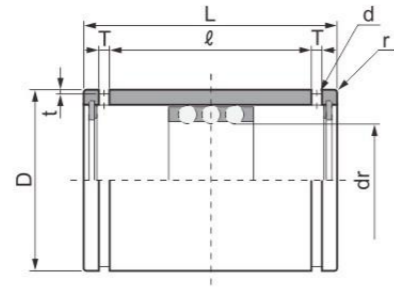
Shaft Dia. (mm)	Standard Type				Dimensions (mm)						Basic Load Ratings		
	Part number		No. of Ball circuit	Wgt. (g)	D1)	L	F	G	J	L2 min	h	Dynamic C (N)	Static Co (N)
	w/o seal	with seal											
1/2	LMBS 12 OP	LMBS 12 UUOP	3	0.03	0.8750	1.250/1.230	0.14	0.63	Thru	1.35	0.32	1260	1290
5/8	LMBS 16 OP	LMBS 16 UUOP	4	0.06	1.1250	1.500/1.480	0.11	0.13	0.039	1.35	0.38	1320	1640
3/4	LMBS 20 OP	LMBS 20 UUOP	5	0.11	1.2500	1.625/1.605	0.14	0.13	0.059	1.65	0.43	1720	2630
1	LMBS 25 OP	LMBS 25 UUOP	5	0.21	1.5625	2.250/2.600	0.14	0.13	0.047	1.90	0.56	2850	3910
1-1/4	LMBS 30 OP	LMBS 30 UUOP	5	0.35	2.0000	3.000/2.970	0.20	0.19	0.090	1.90	0.63	2900	4850
1-1/2	LMBS 40 OP	LMBS 40 UUOP	5	0.67	2.3750	3.000/2.970	0.20	0.19	0.090	2.20	0.75	5900	6700
2	LMBS 50 OP	LMBS 50 UUOP	5	1.10	3.0000	4.000/3.960	0.27	0.31	Thru	2.70	1.00	8100	11700

1) Based on nominal housing bore

ST Series

行程轴承: ST
可进行旋转运动、有限直线运动及复合运动。
所有型号均可根据客户要求做镀镍处理, 有防锈作用。

Ordinary type: ST
ST stroke bearing is a linear and rotational motion mechanism utilizing, the rotational motion of ball elements between an outer cylinder and a shaft.
All models can be done with nickle plated according to customers' requirements, with function of rust-proof.



ST

型号 Model	最大行程 Maximum stroke mm	钢球列数 Number of rows	主要尺寸和公差 Major dimensions and tolerance											额定负荷 Basic load rating		重量 Weight (g)
			dr		D		L		ℓ	T	t	d	r	动负荷 Dynamic C N	静负荷 Static Co N	
			mm	公差 Tolerance μ m	mm	公差 Tolerance μ m	mm	公差 Tolerance μ m								
ST 6	20	3	6		12	0	20		11.3	1.1	0.5	1	0.5	147	216	8.9
ST 8	24	3	8	+22 +13	15	-11	24		17.1	1.5	0.5	1.2	0.5	245	343	15.6
ST 10	30	3	10		19		30	0	22.7	1.5	0.5	1.2	0.5	461	637	28.8
ST 12	32	3	12		23	0	32	-200	24.5	1.5	0.5	1.2	0.5	813	1,070	42
ST 13	32	3	13	+27 +16	23	-13	32		24.5	1.5	0.5	1.2	0.5	813	1,070	39.8
ST 16	40	3	16		28		37		29.1	1.5	0.7	1.3	0.5	990	1,180	71
ST 20	50	3	20		32		45		35.8	2	0.7	1.5	0.5	1,170	1,260	99
ST 25	50	3	25	+33 +20	37	0	45		35.8	2	0.7	1.6	1	1,330	1,330	117
ST 30	82	3	30		45		65	0	53.5	2.5	1	2	1	2,990	3,140	205
ST 35	92	3	35		52		70	0	58.5	2.5	1	2	1.5	3,140	3,530	329
ST 40	108	3	40	+41 +25	60	0	80	-300	68.3	2.5	1	2	1.5	4,120	4,800	516
ST 50	138	3	50		72	0	100		86.4	3	1	2.5	1.5	5,540	6,910	827
ST 60	138	3	60	+49 +30	85	0	100		86.4	3	1	2.5	2	5,980	8,230	1,240
ST 80	132	3	80		110	-22	100	0	86	3	1.5	2.5	2	7,840	12,200	2,050
ST100	132	3	100	+58/+36	130	0/-25	100	-400	86	3	1.5	2.5	2	8,430	14,700	2,440

ST20 A
A 镀镍 Nickle plated

1N≈0.102kgf

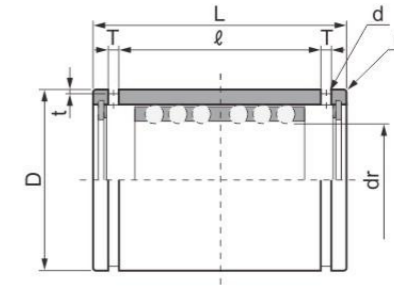
ST...B Series

重负荷型: ST...B

Heavy duty type: ST...B



ST...B

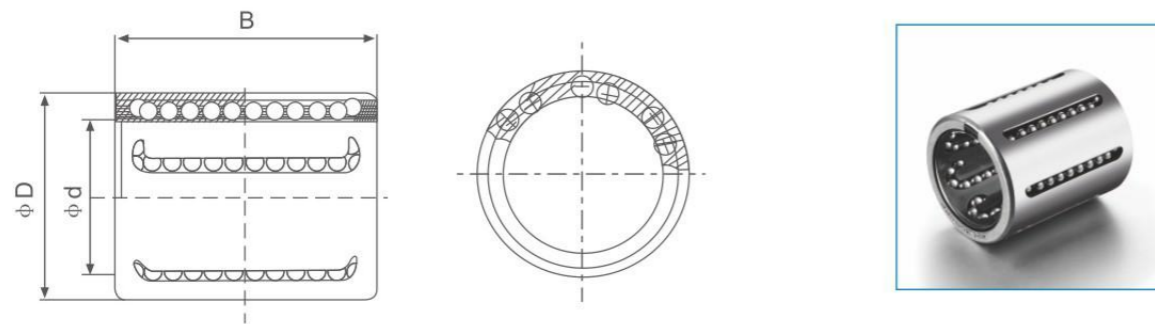


型号 Model	最大行程 Maximum stroke mm	钢球列数 Number of rows	主要尺寸和公差 Major dimensions and tolerance											额定负荷 Basic load rating		重量 Weight (g)
			dr		D		L		ℓ	T	t	d	r	动负荷 Dynamic C N	静负荷 Static Co N	
			mm	公差 Tolerance μ m	mm	公差 Tolerance μ m	mm	公差 Tolerance μ m								
ST 8B	8	6	8	+22 +13	15	0/-11	24		17.1	1.5	0.5	1.2	0.5	490	549	16.8
ST 10B	8	6	10		19		30		22.7	1.5	0.5	1.2	0.5	931	1,030	31.2
ST 12B	8	6	12	+27 +16	23	0	32	-200	24.5	1.5	0.5	1.2	0.5	1,630	1,720	46
ST 16B	16	6	16		28		37		29.1	1.5	0.7	1.3	0.5	1,910	1,980	75
ST 20B	20	6	20		32		45		35.8	2	0.7	1.5	0.5	2,060	2,320	106
ST 25B	20	6	25	+33 +20	37		45		35.8	2	0.7	1.6	1	2,170	2,670	125
ST 30B	44	6	30		45		65	0	53.5	2.5	1	2	1	4,800	6,270	220
ST 35B	54	6	35		52		70	0	58.5	2.5	1	2	1.5	5,050	7,060	346
ST 40B	66	6	40	+41 +25	60	0	80	-300	68.3	2.5	1	2	1.5	6,710	9,560	540
ST 50B	88	6	50		72	0	100		86.4	3	1	2.5	1.5	8,970	13,800	862
ST 60B	88	6	60	+49 +30	85	0	100		86.4	3	1	2.5	2	9,700	16,500	1,290
ST 80B	76	6	80		110	-22	100	0	86	3	1.5	2.5	2	12,700	24,300	2,110
ST100B	76	6	100	+58/+36	130	0/-25	100	-400	86	3	1.5	2.5	2	13,700	29,400	2,520

ST20 B A
A 镀镍 Nickle plated
B 重负荷型 Heavy duty type

1N≈0.102kgf

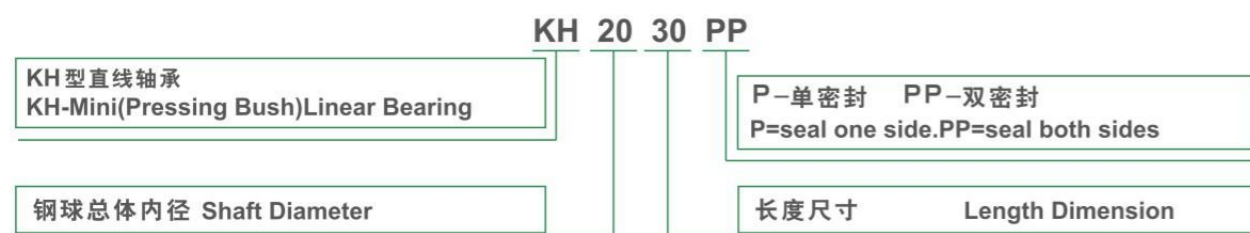
KH



KH

型号 Part Number	尺寸mm (Dimensions)			额定载荷 Basic Load Rating		重量 g Weight
	ϕd	ϕD	B	动 Dynamic Co N	静 Static Co N	
KH-0622	6	12	22	400	239	7
KH-0824	8	15	24	435	280	12
KH-1026	10	17	26	500	370	14.5
KH-1228	12	19	28	620	510	18.5
KH-1428	14	21	28	620	520	20.5
KH-1630	16	24	30	800	620	27.5
KH-2030	20	28	30	950	790	32.5
KH-2540	25	35	40	1990	1670	66
KH-3050	30	40	50	2800	2700	95
KH-4060	40	52	60	4400	4450	182
KH-5070	50	62	70	5500	6300	252

型号表示法 Type number format:



直线轴承传动组合件 Linear Bearing Transmission Assembly

