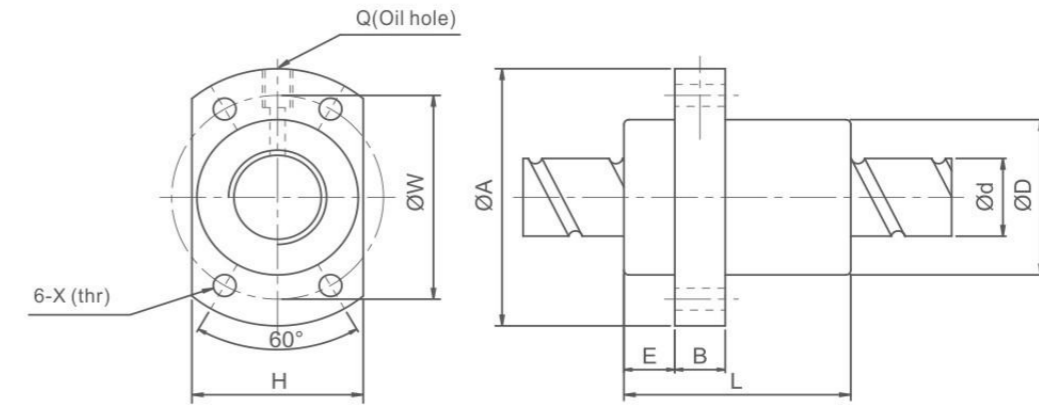


滚珠丝杆 Ball Screw

Size Table of SFY Ball Screws



l : 导程 Lead Da : 珠径 Ball Dia n : 珠圈数 Number of Circuits K : 刚性 Stiffness(Kgf/μm)
Ca : 动额定负荷 Basic Dynamic Rating Load (Kgf) Coa : 静额定负荷 Basic Static Rating Load(Kgf)

Unit:mm

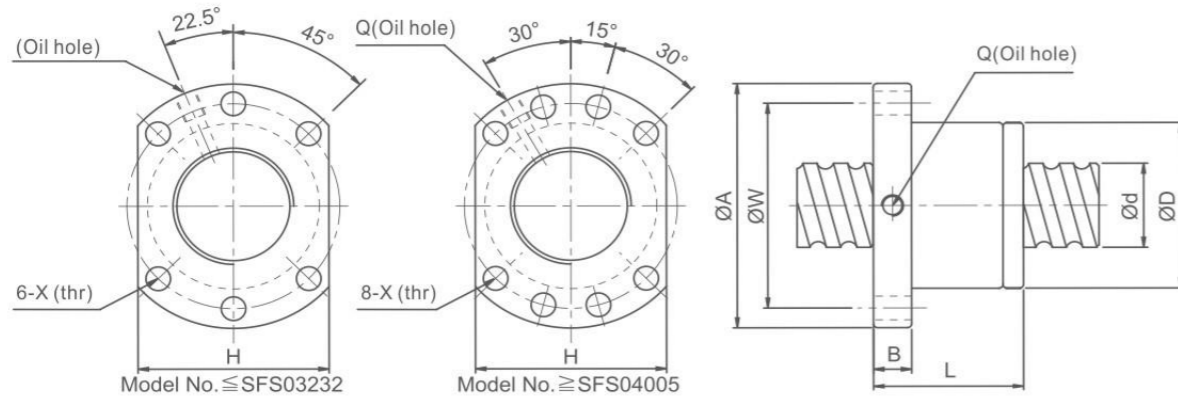
型号 Model no.	d	l	Da	Dimension										Load Rating Ca(kgf)	Load Rating Coa(kgf)
				D	A	E	B	L	W	H	X	Q	n		
SFYR1616-3.6	16	16	2.778	32	53	10.1	10	45	42	34	4.5	M6x1	1.8x2	1073	2551
SFYR2020-3.6	20	20	3.175	39	62	13	10	52	50	41	5.5	M6x1	1.8x2	1387	3515
SFYR2040-1.6	40	40	3.175	39	62	13	10	48	50	41	5.5	M6x1	0.8x2	653	1597
SFYR2550-1.6	50	50	3.969	47	74	15	12	58	60	49	6.6	M6x1	0.8x2	976	2495
SFYR2525-3.6	25	25	3.969	47	74	15	12	64	60	49	6.6	M6x1	1.8x2	2074	5494
SFYR3232-3.6	32	32	4.762	58	92	17	12	78	74	60	9	M6x1	1.8x2	3021	8690
SFYR4040-3.6	40	40	6.35	73	114	19.5	15	99	93	75	11	M6x1	1.8x2	4831	14062
SFYR5050-3.6	50	50	7.938	90	135	21.5	20	117	112	92	14	M6x1	1.8x2	7220	21974

Size Table of SFE Ball Screws

型号 Model no.	d	l	Da	Dimension										Load Rating Ca(kgf)	Load Rating Coa(kgf)
				D	A	E	B	L	W	H	X	Q	n		
SFE01616-3.6	16	16	2.778	32	53	10.1	10	45	42	34	4.5	M6x1	1.8x2	1073	2551
SFE02020-3.6	20	20	3.175	39	62	11.5	10	55	50	41	5.5	M6x1	1.8x2	1387	3515
SFE02525-3.6	25	25	3.969	47	74	13	12	57	60	49	6.6	M6x1	1.8x2	2074	5494
SFE03232-3.6	32	32	4.762	58	92	16	12	82	74	60	9	M6x1	1.8x2	3021	8690
SFE04040-3.6	40	40	6.35	73	114	19	15	100	93	75	11	M6x1	1.8x2	4831	14062
SFE05050-3.6	50	50	7.938	90	135	21.5	20	125	112	92	14	M6x1	1.8x2	7220	21974



Size Table of SFS Ball Screws



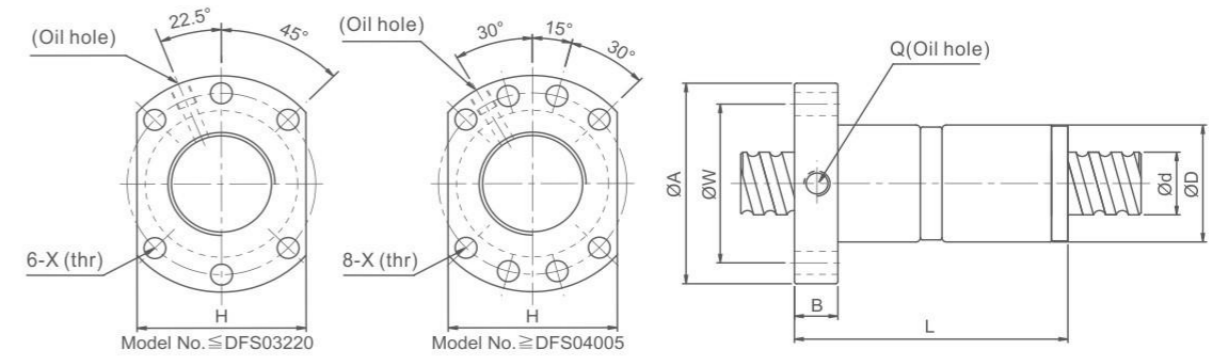
l: 导程 Lead Da: 珠径 Ball Dia n: 珠圈数 Number of Circuits K: 刚性 Stiffness(Kgf/μm)

Ca: 动额定负荷 Basic Dynamic Rating Load (Kgf) Coa: 静额定负荷 Basic Static Rating Load(Kgf)

Unit:mm

型号 Model no.	d	l	Da	Dimension									Load Rating Ca(kgf)	Load Rating Coa(kgf)
				D	A	B	L	W	H	X	Q	n		
SFSR1205-2.8	12	5	2.5	24	40	10	31	32	30	4.5	M6×1	2.8×1	661	1316
SFSR1210-2.8		10	2.5	24	40	10	48.5	32	30	4.5	M6×1	2.8×1	642	1287
SFSR1605-3.8	15	5	2.778	28	48	10	38	38	40	5.5	M6×1	3.8×1	1112	2507
SFSR1610-2.8		10	2.778	28	48	10	47	38	40	5.5	M6×1	2.8×1	839	1821
SFSR1616-1.8		16	2.778	28	48	10	45	38	40	5.5	M6×1	1.8×1	552	1137
SFSR1616-2.8		16	2.778	28	48	10	61	38	40	5.5	M6×1	2.8×1	808	1769
SFSR1620-1.8	20	20	2.778	28	48	10	57	38	40	5.5	M6×1	1.8×1	554	1170
SFSR2005-3.8		5	3.175	36	58	10	40	47	44	6.6	M6×1	3.8×1	1484	3681
SFSR2010-3.8		10	3.175	36	58	10	60	47	44	6.6	M6×1	3.8×1	1516	3833
SFSR2020-1.8		20	3.175	36	58	10	57	47	44	6.6	M6×1	1.8×1	764	1758
SFSR2020-2.8		20	3.175	36	58	10	77	47	44	6.6	M6×1	2.8×1	1118	2734
SFSR2505-3.8		25	5	3.175	40	62	10	40	51	48	6.6	M6×1	3.8×1	1650
SFSR2510-3.8	10		3.175	40	62	12	65	51	48	6.6	M6×1	3.8×1	1638	4633
SFSR2520-2.8	20		3.969	40	62	12	72	51	48	6.6	M6×1	2.8×1	1206	2695
SFSR2525-1.8	25		3.175	40	62	12	70	51	48	6.6	M6×1	1.8×1	843	2199
SFSR2525-2.8	25		3.175	40	62	12	95	51	48	6.6	M6×1	2.8×1	1232	3421
SFSR3205-3.8	32	5	3.175	50	80	12	42	65	62	9	M6×1	3.8×1	1839	6026
SFSR3210-3.8		10	3.969	50	80	13	62	65	62	9	M6×1	3.8×1	2460	7255
SFSR3220-2.8		20	3.969	50	80	12	80	65	62	9	M6×1	2.8×1	1907	5482
SFSR3232-1.8		32	3.969	50	80	13	84	65	62	9	M6×1	1.8×1	1257	3426
SFSR3232-2.8		32	3.969	50	80	13	116	65	62	9	M6×1	2.8×1	1838	2329
SFSR4005-3.8	40	5	3.175	63	93	15	45	78	70	9	M8×1	3.8×1	2018	7589
SFSR4010-3.8		10	6.35	63	93	14	63	78	70	9	M8×1	3.8×1	5035	13943
SFSR4020-2.8		20	6.35	63	93	14	82	78	70	9	M8×1	2.8×1	3959	10715
SFSR4040-1.8		40	6.35	63	93	15	105	78	70	9	M8×1	1.8×1	2585	6648
SFSR4040-2.8		40	6.35	63	93	15	145	78	70	9	M8×1	2.8×1	3780	10341
SFSR5005-3.8	50	5	3.175	75	110	15	45	93	85	11	M8×1	3.8×1	2207	9542
SFSR5010-3.8		10	6.35	75	110	18	68	93	85	11	M8×1	3.8×1	5638	17852
SFSR5020-3.8		20	6.35	75	110	18	108	93	85	11	M8×1	3.8×1	5749	18485
SFSR5050-1.8		50	6.35	75	110	18	125	93	85	11	M8×1	1.8×1	2946	8749
SFSR5050-2.8		50	6.35	75	110	18	175	93	85	11	M8×1	2.8×1	4308	13610

Size Table of DFS Ball Screws



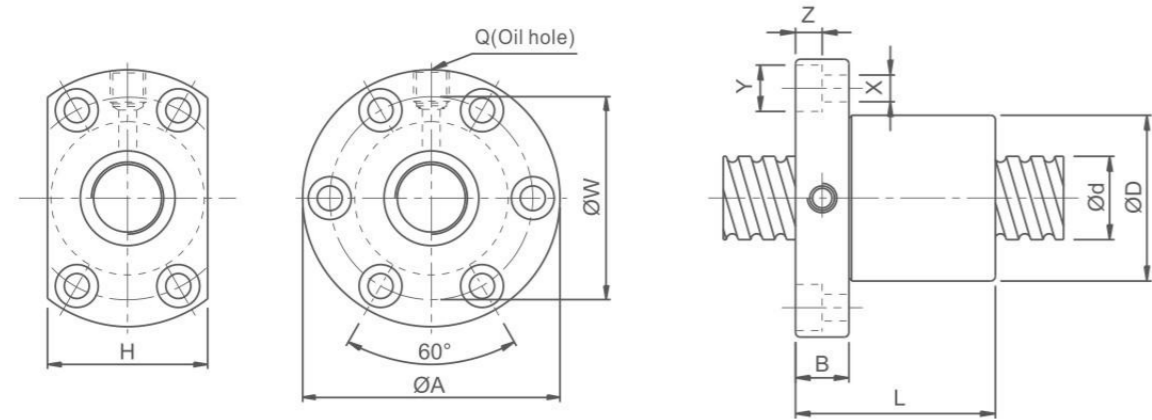
l: 导程 Lead Da: 珠径 Ball Dia n: 珠圈数 Number of Circuits K: 刚性 Stiffness(Kgf/μm)

Ca: 动额定负荷 Basic Dynamic Rating Load (Kgf) Coa: 静额定负荷 Basic Static Rating Load(Kgf)

Unit:mm

型号 Model no.	d	l	Da	Dimension									Load Rating Ca(kgf)	Load Rating Coa(kgf)
				D	A	B	L	W	H	X	Q	n		
DFSR1605-3.8	15	5	2.778	28	48	10	73	38	40	5.5	M6×1	3.8×1	1112	2507
DFSR1610-2.8		10	2.778	28	48	10	97	38	40	5.5	M6×1	2.8×1	839	1821
DFSR2005-3.8	20	5	3.175	36	58	10	75	47	44	6.6	M6×1	3.8×1	1484	3681
DFSR2010-3.8		10	3.175	36	58	10	120	47	44	6.6	M6×1	3.8×1	1516	3833
DFSR2505-3.8	25	5	3.175	40	62	10	75	51	48	6.6	M6×1	3.8×1	1650	4658
DFSR2510-3.8		10	3.175	40	62	12	122	51	48	6.6	M6×1	3.8×1	1638	4633
DFSR2520-2.8		10	3.969	50	62	12	140	51	48	6.6	M6×1	2.8×1	1206	2695
DFSR3205-3.8	32	5	3.175	50	80	12	82	65	62	9	M6×1	3.8×1	1839	6026
DFSR3210-3.8		10	3.969	50	80	13	122	65	62	9	M6×1	3.8×1	2460	7255
DFSR3220-2.8		20	3.969	50	80	12	160	65	62	9	M6×1	2.8×1	1907	5482
DFSR4005-3.8	40	5	3.175	63	63	15	85	78	70	9	M8×1	3.8×1	2018	7589
DFSR4010-3.8		10	6.35	63	63	14	123	78	70	9	M8×1	3.8×1	5035	13943
DFSR4020-2.8		20	6.35	63	63	14	162	78	70	9	M8×1	2.8×1	3959	10715
DFSR5005-3.8	50	5	3.175	75	75	15	85	93	85	11	M8×1	3.8×1	2207	9542
DFSR5010-3.8		10	6.35	75	75	18	138	93	85	11	M8×1	3.8×1	5638	17852
DFSR5020-3.8		20	6.35	75	75	18	218	93	85	11	M8×1	3.8×1	5749	18485

Size Table of SFI Ball Screws

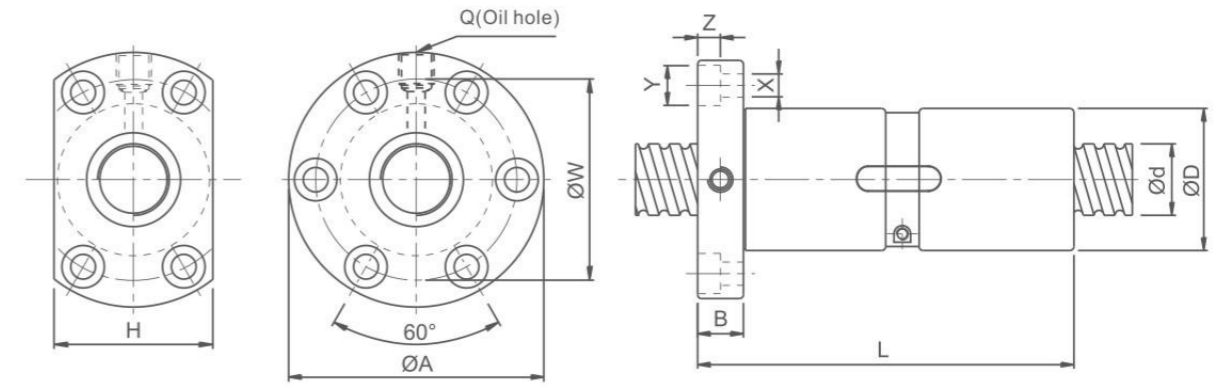


l : 导程 Lead Da : 球径 Ball Dia n : 珠圈数 Number of Circuits K : 刚性 Stiffness(Kgf/μm)
Ca : 动额定负荷 Basic Dynamic Rating Load (Kgf) Coa : 静额定负荷 Basic Static Rating Load(Kgf) Unit:mm

型号 Model no.	d	l	Da	Dimension										Load Rating Ca(kgf)	Load Rating Coa(kgf)	
				D	A	B	L	W	H	X	Y	Z	Q			n
☆ SFIR1605-4	16	5	3.175	30	49	10	50	39	34	4.5	8	4.5	M6×1	1×4	888	1525
☆ SFIR1610-3		10	3.175	34	58	10	57	45	34	5.5	9.5	5.5	M6×1	1×3	716	1232
☆ SFIR2005-4	20	5	3.175	34	57	11	51	45	40	5.5	9.5	5.5	M6×1	1×4	999	1994
☆ SFIR2505-4	25	5	3.175	40	63	11	51	51	46	5.5	9.5	5.	M8×1	1×4	1119	2581
☆ SFIR2510-4		10	4.762	46	72	12	85	58	52	6.5	11	6.5	M8×1	1×4	1903	3695
☆ SFIR3205-4	32	5	3.175	46	72	12	52	58	52	6.5	11	6.5	M8×1	1×4	1264	3402
SFIR3210-4		10	6.35	54	88	15	90	70	62	9	14	8.5	M8×1	1×4	3092	6101
SFIR4005-4	40	5	3.175	56	90	15	55	72	64	9	14	8.5	M8×1	1×4	1407	4341
SFIR4010-4		10	6.35	62	104	18	93	82	70	11	17.5	11	M8×1	1×4	3480	7779
SFIR5010-4	50	10	6.35	72	114	18	93	92	82	11	17.5	11	M8×1	1×4	3898	10325
SFIR6310-4	63	10	6.35	85	131	22	98	107	95	14	20	13	M8×1	1×4	4401	13611
SFIR8010-4	80	10	6.35	105	150	22	98	127	115	14	20	13	M8×1	1×4	4900	17366

Note:with sign ☆ can produce left helix

Size Table of DFI Ball Screws

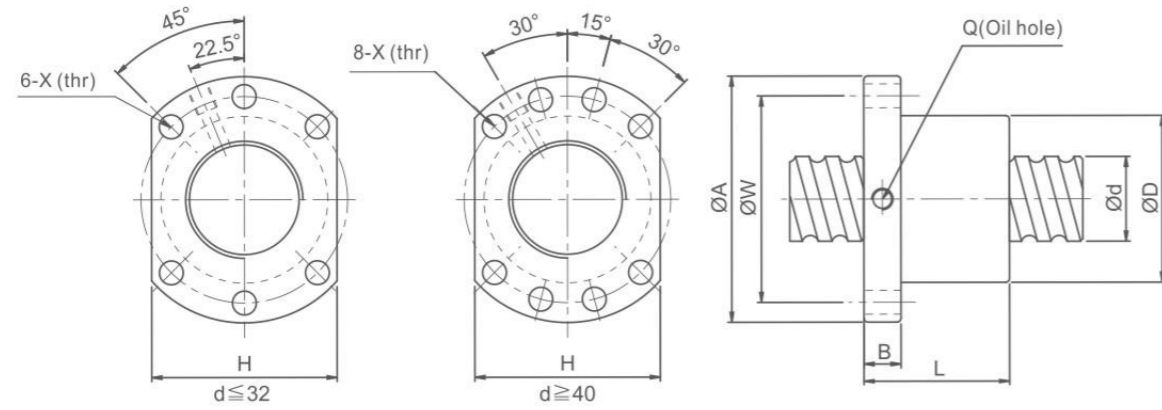


l : 导程 Lead Da : 球径 Ball Dia n : 珠圈数 Number of Circuits K : 刚性 Stiffness(Kgf/μm)
Ca : 动额定负荷 Basic Dynamic Rating Load (Kgf) Coa : 静额定负荷 Basic Static Rating Load(Kgf) Unit:mm

型号 Model no.	d	l	Da	Dimension										Load Rating Ca(kgf)	Load Rating Coa(kgf)	
				D	A	B	L	W	H	X	Y	Z	Q			n
☆ DFIR1605-4	16	5	3.175	30	49	10	10	39	34	4.5	8	4.5	M6×1	1×4	888	1525
☆ DFIR2005-4	20	5	3.175	34	57	11	101	45	40	5.5	9.5	5.5	M6×1	1×4	999	1994
☆ DFIR2505-4	25	5	3.175	40	63	11	101	51	46	5.5	9.5	5.5	M6×1	1×4	1119	2581
☆ DFIR2510-4		10	4.762	46	72	12	145	58	52	6.5	11	6.5	M6×1	1×4	1903	3695
☆ DFIR3205-4	32	5	3.175	46	72	12	102	58	52	6.5	11	6.5	M8×1	1×4	1264	3402
DFIR3210-4		10	6.35	54	88	15	162	70	62	9	14	8.5	M8×1	1×4	3092	6101
DFIR4005-4	40	5	3.175	56	90	15	105	72	64	9	14	8.5	M8×1	1×4	1407	4341
DFIR4010-4		10	6.35	62	104	18	165	82	70	11	17.5	11	M8×1	1×4	3480	7779
DFIR5010-4	50	10	6.35	72	114	18	171	92	82	11	17.5	11	M8×1	1×4	3898	10325
DFIR6310-4	63	10	6.35	85	131	22	182	107	95	14	20	13	M8×1	1×4	4401	13611
DFIR8010-4	80	10	6.35	105	150	22	182	127	115	14	20	13	M8×1	1×4	4900	17366

Note:with sign ☆ can produce left helix

Size Table of SFU Ball Screws

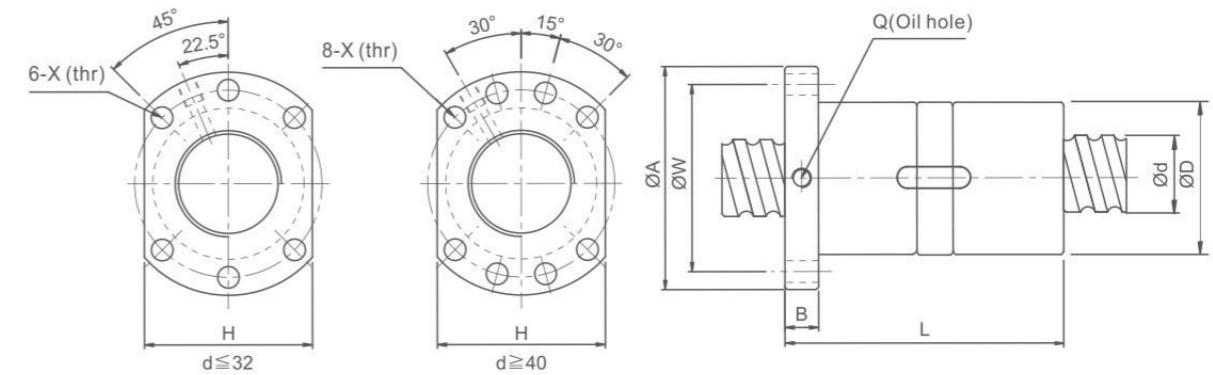


I: 导程 Lead Da: 珠径 Ball Dia n: 珠圈数 Number of Circuits K: 刚性 Stiffness(Kgf/μm)
Ca: 动额定负荷 Basic Dynamic Rating Load (Kgf) Coa: 静额定负荷 Basic Static Rating Load(Kgf) Unit:mm

型号 Model no.	d	I	Da	Dimension									Load Rating Ca(kgf)	Load Rating Coa(kgf)
				D	A	B	L	W	H	X	Q	n		
☆ SFUR 1204-3	12	4	2.5	24	40	10	40	32	30	4.5	M6×1	1×3	451	709
SFUR 1604-3		4	2.381	28	48	10	36	38	40	5.5	M6×1	1×3	488	940
☆ SFUR 1605-3	16	5	3.175	28	48	10	42	38	40	5.5	M6×1	1×3	666	1143
☆ SFUR 1605-4		5	3.175	28	48	10	50	38	40	5.5	M6×1	1×4	888	1525
☆ SFUR 1610-3		10	3.175	28	48	10	57	38	40	5.5	M6×1	1×3	716	1232
SFUR 2004-3		4	2.381	36	58	10	42	47	44	6.6	M6×1	1×3	541	1187
☆ SFUR 2005-3	20	5	3.175	36	58	10	42	47	44	6.6	M6×1	1×3	749	1495
☆ SFUR 2005-4		5	3.175	36	58	10	51	47	44	6.6	M6×1	1×4	999	1994
SFUR 2504-3		4	2.381	40	62	10	42	51	48	6.6	M6×1	1×3	605	1534
☆ SFUR 2505-3		5	3.175	40	62	10	42	51	48	6.6	M6×1	1×3	839	1935
☆ SFUR 2505-4	25	5	3.175	40	62	10	51	51	48	6.6	M6×1	1×4	1119	2581
☆ SFUR 2510-3		10	4.762	40	62	10	70	51	48	6.6	M6×1	1×3	1427	2771
☆ SFUR 2510-4		10	4.762	40	62	12	85	51	48	6.6	M6×1	1×4	1903	3695
☆ SFUR 3205-4		5	3.175	50	80	12	52	65	62	9	M6×1	1×4	1264	3402
☆ SFUR 3210-3	32	10	6.35	50	80	12	74	65	62	9	M6×1	1×3	2319	4575
☆ SFUR 3210-4		10	6.35	50	80	12	90	65	62	9	M6×1	1×4	3092	6101
SFUR 4005-4		5	3.175	63	93	14	55	78	70	9	M8×1	1×4	1407	4341
SFUR 4010-3	40	10	6.35	63	93	14	71	78	70	9	M8×1	1×3	2610	5834
SFUR 4010-4		10	6.35	63	93	14	93	78	70	9	M8×1	1×4	3480	7779
SFUR 5010-4	50	10	6.35	75	110	16	93	93	85	11	M8×1	1×4	3898	10325
SFUR 6310-4		10	6.35	90	125	18	98	108	95	11	M8×1	1×4	4401	13611
☆ SFUR 6320-4	63	20	9.525	95	135	20	149	115	100	13.5	M8×1	1×4	7404	19008
☆ SFUR 8010-4		10	6.35	105	145	20	98	125	110	13.5	M8×1	1×4	4900	17366
☆ SFUR 8020-4	80	20	9.525	125	165	25	154	145	130	13.5	M8×1	1×4	8403	25345

Note:with sign ☆ can produce left helix

Size Table of DFU Ball Screws

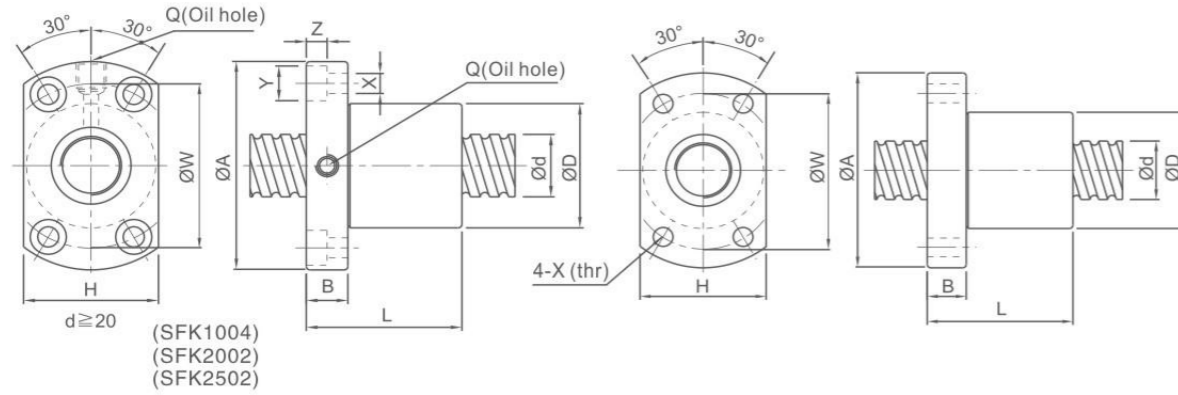


I: 导程 Lead Da: 珠径 Ball Dia n: 珠圈数 Number of Circuits K: 刚性 Stiffness(Kgf/μm)
Ca: 动额定负荷 Basic Dynamic Rating Load (Kgf) Coa: 静额定负荷 Basic Static Rating Load(Kgf) Unit:mm

型号 Model no.	d	I	Da	Dimension									Load Rating Ca(kgf)	Load Rating Coa(kgf)
				D	A	B	L	W	H	X	Q	n		
DFUR 1604-3		4	2.381	28	48	10	80	38	40	5	M6×1	1×3	488	940
☆ DFUR 1605-4	16	5	3.175	28	48	10	100	38	40	5	M6×1	1×4	885	1525
☆ DFUR 1610-3		10	3.175	28	48	10	118	38	40	5	M6×1	1×3	716	1232
DFUR 2004-3		4	2.381	36	58	10	80	47	44	6.6	M6×1	1×3	541	1187
☆ DFUR 2005-4	20	5	3.175	36	58	10	101	47	44	6.6	M6×1	1×4	999	1994
DFUR 2504-3		4	2.381	40	62	10	80	51	48	6.6	M6×1	1×3	605	1534
☆ DFUR 2505-4	25	5	3.175	40	62	10	101	51	48	6.6	M6×1	1×4	1119	2581
☆ DFUR 2510-4		10	4.762	40	62	12	145	51	48	6.6	M6×1	1×4	1927	2771
☆ DFUR 3205-4		5	3.175	50	80	12	102	65	62	9	M6×1	1×4	1264	3402
DFUR 3210-4		10	6.35	50	80	12	162	65	62	9	M6×1	1×4	3092	6101
DFUR 4005-4		5	3.175	63	93	14	105	78	70	9	M8×1	1×4	1407	4341
DFUR 4010-4		10	6.35	63	93	14	165	78	70	9	M8×1	1×4	3480	7979
DFUR 5010-4	50	10	6.35	75	110	16	171	93	85	11	M8×1	1×4	3898	10325
DFUR 6310-4		10	6.35	90	125	18	182	108	95	11	M8×1	1×4	4401	13611
DFUR 6320-4		20	9.525	95	135	20	290	115	100	13.5	M8×1	1×4	7404	19008
DFUR 8010-4		10	6.35	105	145	20	182	125	110	13.5	M8×1	1×4	4900	17366
DFUR 8020-4		20	9.525	125	165	25	295	145	130	13.5	M8×1	1×4	8403	25345

Note:with sign ☆ can produce left helix

Size Table of SFK Ball Screws



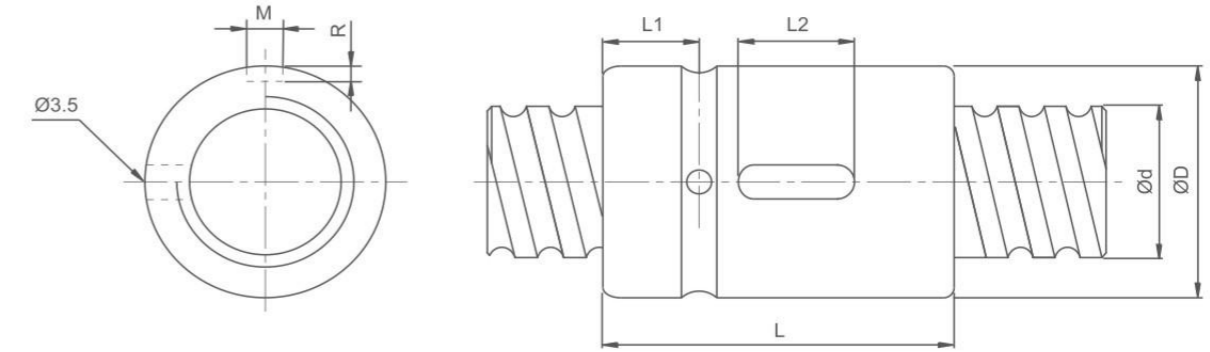
l : 导程 Lead Da : 球径 Ball Dia n : 珠圈数 Number of Circuits K : 刚性 Stiffness(Kgf/μm)

Ca : 动额定负荷 Basic Dynamic Rating Load (Kgf) Coa : 静额定负荷 Basic Static Rating Load(Kgf)

Unit:mm

型号 Model no.	d	l	Da	Dimension										Load Rating Ca(kgf)	Load Rating Coa(kgf)	
				D	A	B	L	W	H	X	Y	Z	Q			n
SFKR0401	4	1	0.8	10	20	3	12	15	14	2.9	-	-	-	1×2	64	97
SFKR0601	6	1	0.8	12	24	3.5	15	18	16	3.4	-	-	-	1×3	111	224
SFKR0801	8	1	0.8	14	27	4	16	21	18	3.4	-	-	-	1×4	161	403
SFKR0802		2	1.2	14	27	4	16	21	18	3.4	-	-	-	1×3	222	458
SFKR082.5		2.5	1.2	16	29	4	26	23	20	3.4	-	-	-	1×3	221	457
SFKR1002	10	2	1.2	18	35	5	28	27	22	4.5	-	-	-	1×3	243	569
SFKR1004		4	2	26	46	10	34	36	28	4.5	8	4.5	M6	1×3	468	905
SFKR1204	12	2	1.2	20	37	5	28	29	24	4.5	-	-	-	1×4	334	906
SFKR1205		4	2.5	24	40	6	28	32	25	3.5	-	-	-	1×3	454	722
SFKR1202		5	2.5	22	37	8	39	29	24	4.5	-	-	-	1×3	675	1316
SFKR1402	14	2	1.2	21	40	6	23	31	26	5.5	-	-	-	1×4	354	1053
SFKR1602	16	2	1.2	25	43	10	40	35	29	5.5	-	-	M6	1×4	373	1200
SFKR2002	20	2	1.2	50	80	15	55	65	68	6.5	10.5	6	M6	1×6	581	2284
SFKR2502	25	2	1.2	50	80	13	43	65	68	6.5	10.5	6	M6	1×5	540	2381

Size Table of SCI Ball Screws



l : 导程 Lead Da : 球径 Ball Dia n : 珠圈数 Number of Circuits K : 刚性 Stiffness(Kgf/μm)

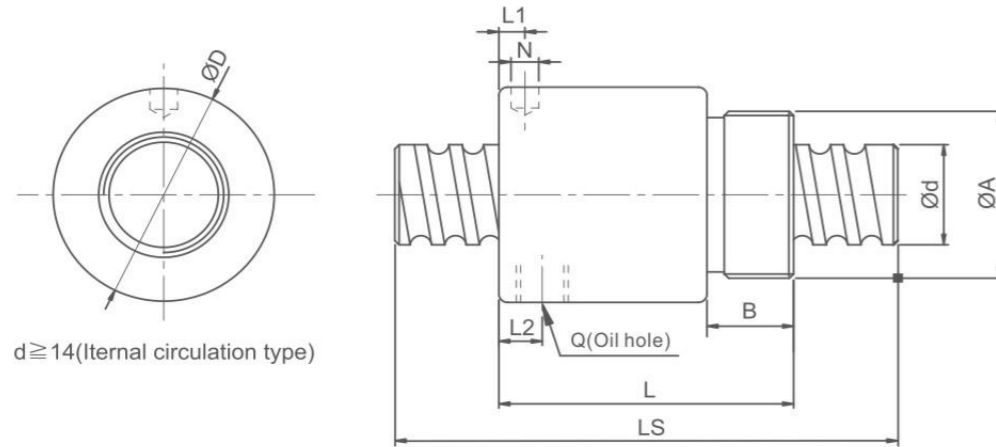
Ca : 动额定负荷 Basic Dynamic Rating Load (Kgf) Coa : 静额定负荷 Basic Static Rating Load(Kgf)

Unit:mm

型号 Model no.	d	l	Da	Dimension							Load Rating Ca(kgf)	Load Rating Coa(kgf)	K kgf/ μm
				D	L	L1	L2	M	R	n			
SCI01604-4	16	4	2.381	30	40	9	15	3	1.5	1×4	973	2406	32
☆ SCI01605-4		5	3.175	30	45	9	20	5	3	1×4	1380	3052	33
SCI02004-4	20	4	2.381	34	40	9	15	3	1.5	1×4	1066	2987	37
☆ SCI02005-4		5	3.175	34	45	9	20	5	3	1×4	1551	3875	39
SCI02504-4	25	4	2.381	40	40	9	15	3	1.5	1×4	1180	3795	73
☆ SCI02505-4		5	3.175	40	45	9	20	5	3	1×4	1724	4904	45
SCI02510-4		10	4.762	46	85	13	30	5	3	1×4	2954	7295	51
☆ SCI03205-4	32	5	3.175	46	45	9	20	5	3	1×4	1922	6343	52
SCI03210-4		10	6.35	54	85	13	30	5	3	1×4	4805	12208	62
SCI04005-4	40	5	3.175	56	45	9	20	5	3	1×4	2110	7988	59
SCI04010-4		10	6.35	62	85	13	30	5	3	1×4	5399	15500	72
SCI05010-4	50	10	6.35	72	85	13	30	5	3	1×4	6004	19614	83
SCI06310-4	63	10	6.35	85	85	13	30	6	3.5	1×4	6719	25358	95
SCI08010-4	80	10	6.35	105	85	13	30	8	4.5	1×4	7346	31953	109

Note:with sign ☆ can produce left helix

Size Table of BSH Ball Screws



l : 导程 Lead Da : 珠径 Ball Dia n : 珠圈数 Number of Circuits K : 刚性 Stiffness(Kgf/ μ m)

Ca : 动额定负荷 Basic Dynamic Rating Load (Kgf) Coa : 静额定负荷 Basic Static Rating Load(Kgf)

Unit:mm

型号 Model no.	d	l	Da	Dimension									Load Rating Ca(kgf)	Load Rating Coa(kgf)	K kgf/ μ m
				D	A	B	L	L1	N	L2	Q	n			
BSHR0082.5-2.5	8	2.5	1.2	17.5	M15×1P	7.5	23.5	10	3	-	-	2.5×1	189	381	11
BSHR01002-3.5	10	2	1.2	19.5	M17×1P	7.5	22	3	3.2	-	-	3.5×1	277	664	17
BSHR01004-2.5		4	2	25	M20×1P	10	34	3	3	-	-	2.5×1	400	754	14
BSHR01204-3.5	12	4	2.5	25.5	M20×1P	10	34	13	3	-	-	3.5×1	804	1649	23
BSHR01205-3.5		5	2.5	25.5	M20×1P	10	39	16.25	3	-	-	3.5×1	801	1644	24
BSHR01404-3	14	4	2.5	32.1	M25×1.5P	10	35	11	3	-	-	1×3	748	1609	26
BSHR01604-3		4	2.381	29	M22×1.5P	8	32	4	3.2	-	-	1×3	759	1804	24
BSHR01605-3	16	5	3.175	32.5	M26×1.5P	12	42	19.25	3	-	-	1×3	1077	2289	25
BSHR01610-2		10	3.175	32	M26×1.5P	12	50	3	4	3	M4	1×2	675	1316	14
BSHR02005-3	20	5	3.175	38	M35×1.5P	15	45	20.3	3	-	-	1×3	1211	2906	30
BSHR02505-4	25	5	3.175	43	M40×1.5P	19	69	32.11	3	8	M6	1×4	1724	4904	37
BSHR02510-4		10	4.762	43	M40×1.5P	19	84	8	6	8	M6	1×4	2954	7295	41

Remark: The outer diameter $\phi 8 \sim \phi 16$ nut standard does not have a scraper attached.

联轴器 Coupling

